

145 West Lancaster Avenue
Paoli, Pennsylvania 19301
Telephone 610 296 2500
Facsimile 610 296 7922

Azuka Theatre Collective
1700 Sansom Street 800
Philadelphia, PA 19103

Dear Mark:

Attached is a copy of the 2023 Exempt Organization returns, as follows...

2023 Form 990

2023 Pennsylvania Form BCO-10

The copy should be retained for your records. Do not mail this copy to the tax authority.

You will receive an email from Adobe Acrobat Sign that will direct you to an **E-file Authorization Form** that should be signed and returned to our office upon receipt. Please do not delay in signing the form. We cannot submit the return to the tax authority on your behalf until we receive the signed form.

Please be aware you will receive the **Tax Form** that requires your attention in the mail. Please file with the tax authority according to the filing instructions and mail using the envelope provided.

We sincerely appreciate the opportunity to serve you. Please contact us if you have any questions concerning the returns.

Very truly yours,

Robert J. Kratz & Company, Certified Public Accountants

145 West Lancaster Avenue
Paoli, Pennsylvania 19301
Telephone 610 296 2500
Facsimile 610 296 7922

PRIVACY POLICY

CPAs, like all providers of personal financial services, are now required by law to inform their clients of their policies regarding privacy of client information. CPAs have been and continue to be bound by professional standards of confidentiality that are even more stringent than those required by law. Therefore, we have always protected your right to privacy.

TYPES OF NONPUBLIC PERSONAL INFORMATION WE COLLECT

We collect nonpublic personal information about you that is either provided to us by you or obtained by us with your authorization.

PARTIES TO WHOM WE DISCLOSE INFORMATION

For current and former clients, we do not disclose any nonpublic personal information obtained in the course of our practice except as required or permitted by law. Permitted disclosures include, for instance, providing information to our employees and, in limited situations, to unrelated third parties who need to know that information to assist us in providing services to you. In all such situations, we stress the confidential nature of information being shared.

PROTECTING THE CONFIDENTIALITY AND SECURITY OF CURRENT AND FORMER CLIENTS' INFORMATION

We retain records relating to professional services that we provide so that we are better able to assist you with your professional needs and, in some cases, to comply with professional guidelines. In order to guard your nonpublic personal information, we maintain physical, electronic, and procedural safeguards that comply with our professional standards.

Please call if you have any questions, because your privacy, our professional ethics, and the ability to provide you with quality financial services are very important to us.

TAX RETURN FILING INSTRUCTIONS

FORM 990

FOR THE YEAR ENDING

June 30, 2024

Prepared For:

Azuka Theatre Collective
1700 Sansom Street 800
Philadelphia, PA 19103

Prepared By:

Robert J. Kratz & Company
145 West Lancaster Avenue
Paoli, PA 19301

Amount Due or Refund:

Not applicable

Make Check Payable To:

Not applicable

Mail Tax Return and Check (if applicable) To:

Not applicable

Return Must be Mailed On or Before:

Not applicable

Special Instructions:

This copy of the return is provided for state filing purposes.

This return has been prepared for electronic filing. After you have reviewed the return, please sign and return Form 8879-TE to our office upon receipt. We will transmit the return electronically to the IRS on your behalf.

Form **8879-TE**

IRS E-file Signature Authorization for a Tax Exempt Entity

OMB No. 1545-0047

For calendar year 2023, or fiscal year beginning JUL 1, 2023, and ending JUN 30, 2024

2023

Department of the Treasury
Internal Revenue Service

Do not send to the IRS. Keep for your records.
Go to www.irs.gov/Form8879TE for the latest information.

Name of filer AZUKA THEATRE COLLECTIVE	EIN or SSN 23-3005982
Name and title of officer or person subject to tax LEE PORTER BOARD PRESIDENT	

Part I Type of Return and Return Information

Check the box for the return for which you are using this Form 8879-TE and enter the applicable amount, if any, from the return. Form 8038-CP and Form 5330 filers may enter dollars and cents. For all other forms, enter whole dollars only. If you check the box on line **1a, 2a, 3a, 4a, 5a, 6a, 7a, 8a, 9a, or 10a** below, and the amount on that line for the return being filed with this form was blank, then leave line **1b, 2b, 3b, 4b, 5b, 6b, 7b, 8b, 9b, or 10b**, whichever is applicable, blank (do not enter -0-). But, if you entered -0- on the return, then enter -0- on the applicable line below. **Do not complete more than one line in Part I.**

1a Form 990 check here <input checked="" type="checkbox"/>	b Total revenue , if any (Form 990, Part VIII, column (A), line 12)	1b <u>328,448.</u>
2a Form 990-EZ check here <input type="checkbox"/>	b Total revenue , if any (Form 990-EZ, line 9)	2b _____
3a Form 1120-POL check here <input type="checkbox"/>	b Total tax (Form 1120-POL, line 22)	3b _____
4a Form 990-PF check here <input type="checkbox"/>	b Tax based on investment income (Form 990-PF, Part V, line 5)	4b _____
5a Form 8868 check here <input type="checkbox"/>	b Balance due (Form 8868, line 3c)	5b _____
6a Form 990-T check here <input type="checkbox"/>	b Total tax (Form 990-T, Part III, line 4)	6b _____
7a Form 4720 check here <input type="checkbox"/>	b Total tax (Form 4720, Part III, line 1)	7b _____
8a Form 5227 check here <input type="checkbox"/>	b FMV of assets at end of tax year (Form 5227, Item D)	8b _____
9a Form 5330 check here <input type="checkbox"/>	b Tax due (Form 5330, Part II, line 19)	9b _____
10a Form 8038-CP check here <input type="checkbox"/>	b Amount of credit payment requested (Form 8038-CP, Part III, line 22)	10b _____

Part II Declaration and Signature Authorization of Officer or Person Subject to Tax

Under penalties of perjury, I declare that I am an officer of the above entity or I am a person subject to tax with respect to (name of entity) _____, (EIN) _____ and that I have examined a copy of the 2023 electronic return and accompanying schedules and statements, and, to the best of my knowledge and belief, they are true, correct, and complete. I further declare that the amount in Part I above is the amount shown on the copy of the electronic return. I consent to allow my intermediate service provider, transmitter, or electronic return originator (ERO) to send the return to the IRS and to receive from the IRS (a) an acknowledgement of receipt or reason for rejection of the transmission, (b) the reason for any delay in processing the return or refund, and (c) the date of any refund. If applicable, I authorize the U.S. Treasury and its designated Financial Agent to initiate an electronic funds withdrawal (direct debit) entry to the financial institution account indicated in the tax preparation software for payment of the federal taxes owed on this return, and the financial institution to debit the entry to this account. To revoke a payment, I must contact the U.S. Treasury Financial Agent at 1-888-353-4537 no later than 2 business days prior to the payment (settlement) date. I also authorize the financial institutions involved in the processing of the electronic payment of taxes to receive confidential information necessary to answer inquiries and resolve issues related to the payment. I have selected a personal identification number (PIN) as my signature for the electronic return and, if applicable, the consent to electronic funds withdrawal.

PIN: check one box only

I authorize ROBERT J. KRATZ & COMPANY to enter my PIN 05982
ERO firm name Enter five numbers, but do not enter all zeros

as my signature on the tax year 2023 electronically filed return. If I have indicated within this return that a copy of the return is being filed with a state agency(ies) regulating charities as part of the IRS Fed/State program, I also authorize the aforementioned ERO to enter my PIN on the return's disclosure consent screen.

As an officer or person subject to tax with respect to the entity, I will enter my PIN as my signature on the tax year 2023 electronically filed return. If I have indicated within this return that a copy of the return is being filed with a state agency(ies) regulating charities as part of the IRS Fed/State program, I will enter my PIN on the return's disclosure consent screen.

Signature of officer or person subject to tax _____

Date _____

Part III Certification and Authentication

ERO's EFIN/PIN. Enter your six-digit electronic filing identification number (EFIN) followed by your five-digit self-selected PIN.

23575914511

Do not enter all zeros

I certify that the above numeric entry is my PIN, which is my signature on the 2023 electronically filed return indicated above. I confirm that I am submitting this return in accordance with the requirements of **Pub. 4163**, Modernized e-File (MeF) Information for Authorized IRS *e-file* Providers for Business Returns.

ERO's signature ROBERT J. KRATZ & COMPANY Date _____

ERO Must Retain This Form - See Instructions
Do Not Submit This Form to the IRS Unless Requested To Do So

For Privacy Act and Paperwork Reduction Act Notice, see instructions.

Form **8879-TE** (2023)

Return of Organization Exempt From Income Tax

Form 990

Under section 501(c), 527, or 4947(a)(1) of the Internal Revenue Code (except private foundations) Do not enter social security numbers on this form as it may be made public. Go to www.irs.gov/Form990 for instructions and the latest information.

2023

Open to Public Inspection

A For the 2023 calendar year, or tax year beginning JUL 1, 2023 and ending JUN 30, 2024

B Check if applicable: C Name of organization: AZUKA THEATRE COLLECTIVE D Employer identification number: 23-3005982 E Telephone number: 2155631100 G Gross receipts \$: 328,448. H(a) Is this a group return for subordinates? H(b) Are all subordinates included? I Tax-exempt status: J Website: WWW.AZUKATHEATRE.ORG K Form of organization: L Year of formation: 1999 M State of legal domicile: PA

Part I Summary

Table with 3 columns: Description, Prior Year, Current Year. Rows include: 1 Briefly describe the organization's mission... 2 Check this box... 3-7a Governance metrics... 8-12 Revenue... 13-19 Expenses... 20-22 Net Assets or Fund Balances.

Part II Signature Block

Under penalties of perjury, I declare that I have examined this return, including accompanying schedules and statements, and to the best of my knowledge and belief, it is true, correct, and complete. Declaration of preparer (other than officer) is based on all information of which preparer has any knowledge.

Sign Here: Signature of officer LEE PORTER, BOARD PRESIDENT Date: Print/Type preparer's name EDWARD R. SWIFT, CPA Preparer's signature EDWARD R. SWIFT, CPA Date: Check if self-employed PTIN P00836975 Preparer Use Only: Firm's name ROBERT J. KRATZ & COMPANY Firm's EIN 23-2875868 Firm's address 145 WEST LANCASTER AVENUE PAOLI, PA 19301 Phone no. 610-296-2500

May the IRS discuss this return with the preparer shown above? See instructions [X] Yes [] No

Part III Statement of Program Service Accomplishments

Check if Schedule O contains a response or note to any line in this Part III

1 Briefly describe the organization's mission: AZUKA THEATRE STRENGTHENS THE CONNECTION AND SHARED HUMANITY AMONG ITS DIVERSE AUDIENCES BY GIVING VOICE TO THE PEOPLE WHOSE STORIES GO UNHEARD.

2 Did the organization undertake any significant program services during the year which were not listed on the prior Form 990 or 990-EZ? Yes No

3 Did the organization cease conducting, or make significant changes in how it conducts, any program services? Yes No

4 Describe the organization's program service accomplishments for each of its three largest program services, as measured by expenses. Section 501(c)(3) and 501(c)(4) organizations are required to report the amount of grants and allocations to others, the total expenses, and revenue, if any, for each program service reported.

4a (Code:) (Expenses \$ 246,123. including grants of \$) (Revenue \$ 31,444.) THE COMPANY REACHED ITS GOALS THIS SEASON WITH 3 THEATRICAL PRODUCTIONS TO AN AUDIENCE OF MORE THAN 2,100.

4b (Code:) (Expenses \$ including grants of \$) (Revenue \$)

4c (Code:) (Expenses \$ including grants of \$) (Revenue \$)

4d Other program services (Describe on Schedule O.) (Expenses \$ including grants of \$) (Revenue \$)

4e Total program service expenses 246,123.

Part IV Checklist of Required Schedules

	Yes	No
1 Is the organization described in section 501(c)(3) or 4947(a)(1) (other than a private foundation)? <i>If "Yes," complete Schedule A</i>	X	
2 Is the organization required to complete <i>Schedule B, Schedule of Contributors</i> ? See instructions	X	
3 Did the organization engage in direct or indirect political campaign activities on behalf of or in opposition to candidates for public office? <i>If "Yes," complete Schedule C, Part I</i>		X
4 Section 501(c)(3) organizations. Did the organization engage in lobbying activities, or have a section 501(h) election in effect during the tax year? <i>If "Yes," complete Schedule C, Part II</i>		X
5 Is the organization a section 501(c)(4), 501(c)(5), or 501(c)(6) organization that receives membership dues, assessments, or similar amounts as defined in Rev. Proc. 98-19? <i>If "Yes," complete Schedule C, Part III</i>		X
6 Did the organization maintain any donor advised funds or any similar funds or accounts for which donors have the right to provide advice on the distribution or investment of amounts in such funds or accounts? <i>If "Yes," complete Schedule D, Part I</i>		X
7 Did the organization receive or hold a conservation easement, including easements to preserve open space, the environment, historic land areas, or historic structures? <i>If "Yes," complete Schedule D, Part II</i>		X
8 Did the organization maintain collections of works of art, historical treasures, or other similar assets? <i>If "Yes," complete Schedule D, Part III</i>		X
9 Did the organization report an amount in Part X, line 21, for escrow or custodial account liability; serve as a custodian for amounts not listed in Part X; or provide credit counseling, debt management, credit repair, or debt negotiation services? <i>If "Yes," complete Schedule D, Part IV</i>		X
10 Did the organization, directly or through a related organization, hold assets in donor-restricted endowments or in quasi-endowments? <i>If "Yes," complete Schedule D, Part V</i>		X
11 If the organization's answer to any of the following questions is "Yes," then complete Schedule D, Parts VI, VII, VIII, IX, or X, as applicable.		
a Did the organization report an amount for land, buildings, and equipment in Part X, line 10? <i>If "Yes," complete Schedule D, Part VI</i>	X	
b Did the organization report an amount for investments - other securities in Part X, line 12, that is 5% or more of its total assets reported in Part X, line 16? <i>If "Yes," complete Schedule D, Part VII</i>		X
c Did the organization report an amount for investments - program related in Part X, line 13, that is 5% or more of its total assets reported in Part X, line 16? <i>If "Yes," complete Schedule D, Part VIII</i>		X
d Did the organization report an amount for other assets in Part X, line 15, that is 5% or more of its total assets reported in Part X, line 16? <i>If "Yes," complete Schedule D, Part IX</i>	X	
e Did the organization report an amount for other liabilities in Part X, line 25? <i>If "Yes," complete Schedule D, Part X</i>		X
f Did the organization's separate or consolidated financial statements for the tax year include a footnote that addresses the organization's liability for uncertain tax positions under FIN 48 (ASC 740)? <i>If "Yes," complete Schedule D, Part X</i>		X
12a Did the organization obtain separate, independent audited financial statements for the tax year? <i>If "Yes," complete Schedule D, Parts XI and XII</i>	X	
b Was the organization included in consolidated, independent audited financial statements for the tax year? <i>If "Yes," and if the organization answered "No" to line 12a, then completing Schedule D, Parts XI and XII is optional</i>		X
13 Is the organization a school described in section 170(b)(1)(A)(ii)? <i>If "Yes," complete Schedule E</i>		X
14a Did the organization maintain an office, employees, or agents outside of the United States?		X
b Did the organization have aggregate revenues or expenses of more than \$10,000 from grantmaking, fundraising, business, investment, and program service activities outside the United States, or aggregate foreign investments valued at \$100,000 or more? <i>If "Yes," complete Schedule F, Parts I and IV</i>		X
15 Did the organization report on Part IX, column (A), line 3, more than \$5,000 of grants or other assistance to or for any foreign organization? <i>If "Yes," complete Schedule F, Parts II and IV</i>		X
16 Did the organization report on Part IX, column (A), line 3, more than \$5,000 of aggregate grants or other assistance to or for foreign individuals? <i>If "Yes," complete Schedule F, Parts III and IV</i>		X
17 Did the organization report a total of more than \$15,000 of expenses for professional fundraising services on Part IX, column (A), lines 6 and 11e? <i>If "Yes," complete Schedule G, Part I.</i> See instructions		X
18 Did the organization report more than \$15,000 total of fundraising event gross income and contributions on Part VIII, lines 1c and 8a? <i>If "Yes," complete Schedule G, Part II</i>		X
19 Did the organization report more than \$15,000 of gross income from gaming activities on Part VIII, line 9a? <i>If "Yes," complete Schedule G, Part III</i>		X
20a Did the organization operate one or more hospital facilities? <i>If "Yes," complete Schedule H</i>		X
b If "Yes" to line 20a, did the organization attach a copy of its audited financial statements to this return?		
21 Did the organization report more than \$5,000 of grants or other assistance to any domestic organization or domestic government on Part IX, column (A), line 1? <i>If "Yes," complete Schedule I, Parts I and II</i>		X

Part IV Checklist of Required Schedules (continued)

Table with 3 columns: Question number, Yes, No. Rows 22-38 detailing various organizational requirements and compliance checks.

Part V Statements Regarding Other IRS Filings and Tax Compliance

Check if Schedule O contains a response or note to any line in this Part V

Table with 3 columns: Question number, Yes, No. Rows 1a, 1b, 1c detailing backup withholding rules and other IRS filings.

Part V Statements Regarding Other IRS Filings and Tax Compliance (continued)

Table with columns for question number, question text, and Yes/No response boxes. Includes questions 2a through 17 regarding employee reporting, tax returns, gross income, foreign accounts, prohibited transactions, and charitable contributions.

Part VI Governance, Management, and Disclosure. For each "Yes" response to lines 2 through 7b below, and for a "No" response to line 8a, 8b, or 10b below, describe the circumstances, processes, or changes on Schedule O. See instructions.

Check if Schedule O contains a response or note to any line in this Part VI [X]

Section A. Governing Body and Management

Table with 3 columns: Question, Yes, No. Rows include: 1a Enter the number of voting members of the governing body at the end of the tax year (10); 1b Enter the number of voting members included on line 1a, above, who are independent (9); 2 Did any officer, director, trustee, or key employee have a family relationship or a business relationship with any other officer, director, trustee, or key employee? (X); 3 Did the organization delegate control over management duties customarily performed by or under the direct supervision of officers, directors, trustees, or key employees to a management company or other person? (X); 4 Did the organization make any significant changes to its governing documents since the prior Form 990 was filed? (X); 5 Did the organization become aware during the year of a significant diversion of the organization's assets? (X); 6 Did the organization have members or stockholders? (X); 7a Did the organization have members, stockholders, or other persons who had the power to elect or appoint one or more members of the governing body? (X); 7b Are any governance decisions of the organization reserved to (or subject to approval by) members, stockholders, or persons other than the governing body? (X); 8 Did the organization contemporaneously document the meetings held or written actions undertaken during the year by the following: a The governing body? (X); b Each committee with authority to act on behalf of the governing body? (X); 9 Is there any officer, director, trustee, or key employee listed in Part VII, Section A, who cannot be reached at the organization's mailing address? If "Yes," provide the names and addresses on Schedule O (X).

Section B. Policies (This Section B requests information about policies not required by the Internal Revenue Code.)

Table with 3 columns: Question, Yes, No. Rows include: 10a Did the organization have local chapters, branches, or affiliates? (X); 10b If "Yes," did the organization have written policies and procedures governing the activities of such chapters, affiliates, and branches to ensure their operations are consistent with the organization's exempt purposes?; 11a Has the organization provided a complete copy of this Form 990 to all members of its governing body before filing the form? (X); 11b Describe on Schedule O the process, if any, used by the organization to review this Form 990.; 12a Did the organization have a written conflict of interest policy? If "No," go to line 13 (X); 12b Were officers, directors, or trustees, and key employees required to disclose annually interests that could give rise to conflicts?; 12c Did the organization regularly and consistently monitor and enforce compliance with the policy? If "Yes," describe on Schedule O how this was done; 13 Did the organization have a written whistleblower policy? (X); 14 Did the organization have a written document retention and destruction policy? (X); 15 Did the process for determining compensation of the following persons include a review and approval by independent persons, comparability data, and contemporaneous substantiation of the deliberation and decision? a The organization's CEO, Executive Director, or top management official (X); b Other officers or key employees of the organization (X); If "Yes" to line 15a or 15b, describe the process on Schedule O. See instructions.; 16a Did the organization invest in, contribute assets to, or participate in a joint venture or similar arrangement with a taxable entity during the year? (X); 16b If "Yes," did the organization follow a written policy or procedure requiring the organization to evaluate its participation in joint venture arrangements under applicable federal tax law, and take steps to safeguard the organization's exempt status with respect to such arrangements?

Section C. Disclosure

- 17 List the states with which a copy of this Form 990 is required to be filed PA
18 Section 6104 requires an organization to make its Forms 1023 (1024 or 1024-A, if applicable), 990, and 990-T (section 501(c)(3)s only) available for public inspection. Indicate how you made these available. Check all that apply.
[] Own website [] Another's website [X] Upon request [] Other (explain on Schedule O)
19 Describe on Schedule O whether (and if so, how) the organization made its governing documents, conflict of interest policy, and financial statements available to the public during the tax year.
20 State the name, address, and telephone number of the person who possesses the organization's books and records
MANAGEMENT - 2155631100
1700 SANSOM STREET #800, PHILADELPHIA, PA 19103

Part VIII Statement of Revenue

Check if Schedule O contains a response or note to any line in this Part VIII

			(A)	(B)	(C)	(D)	
			Total revenue	Related or exempt function revenue	Unrelated business revenue	Revenue excluded from tax under sections 512 - 514	
Contributions, Gifts, Grants and Other Similar Amounts	1 a Federated campaigns	1a					
	b Membership dues	1b					
	c Fundraising events	1c					
	d Related organizations	1d					
	e Government grants (contributions)	1e	33,369.				
	f All other contributions, gifts, grants, and similar amounts not included above ...	1f	240,815.				
	g Noncash contributions included in lines 1a-1f	1g	\$				
	h Total. Add lines 1a-1f			274,184.			
Program Service Revenue	2 a <u>TICKET REVENUE</u>	Business Code					
		711110	31,444.	31,444.			
	b _____						
	c _____						
	d _____						
	e _____						
	f All other program service revenue						
g Total. Add lines 2a-2f			31,444.				
Other Revenue	3 Investment income (including dividends, interest, and other similar amounts)		3.			3.	
	4 Income from investment of tax-exempt bond proceeds						
	5 Royalties						
	6 a Gross rents	6a	(i) Real	17,155.			
			(ii) Personal				
	b Less: rental expenses ...	6b	0.				
	c Rental income or (loss)	6c	17,155.				
	d Net rental income or (loss)			17,155.		17,155.	
	7 a Gross amount from sales of assets other than inventory	7a	(i) Securities				
			(ii) Other				
	b Less: cost or other basis and sales expenses	7b					
	c Gain or (loss)	7c					
d Net gain or (loss)							
8 a Gross income from fundraising events (not including \$ _____ of contributions reported on line 1c). See Part IV, line 18	8a						
b Less: direct expenses	8b						
c Net income or (loss) from fundraising events							
9 a Gross income from gaming activities. See Part IV, line 19	9a						
b Less: direct expenses	9b						
c Net income or (loss) from gaming activities							
10 a Gross sales of inventory, less returns and allowances	10a						
b Less: cost of goods sold	10b						
c Net income or (loss) from sales of inventory							
Miscellaneous Revenue	11 a <u>MISCELLANEOUS</u>	Business Code					
		900099	5,662.			5,662.	
	b _____						
	c _____						
	d All other revenue						
e Total. Add lines 11a-11d			5,662.				
12 Total revenue. See instructions			328,448.	31,444.	0.	22,820.	

Part IX Statement of Functional Expenses

Section 501(c)(3) and 501(c)(4) organizations must complete all columns. All other organizations must complete column (A).

Check if Schedule O contains a response or note to any line in this Part IX

Do not include amounts reported on lines 6b, 7b, 8b, 9b, and 10b of Part VIII.	(A) Total expenses	(B) Program service expenses	(C) Management and general expenses	(D) Fundraising expenses
1 Grants and other assistance to domestic organizations and domestic governments. See Part IV, line 21 ...				
2 Grants and other assistance to domestic individuals. See Part IV, line 22				
3 Grants and other assistance to foreign organizations, foreign governments, and foreign individuals. See Part IV, lines 15 and 16				
4 Benefits paid to or for members				
5 Compensation of current officers, directors, trustees, and key employees				
6 Compensation not included above to disqualified persons (as defined under section 4958(f)(1)) and persons described in section 4958(c)(3)(B)				
7 Other salaries and wages	98,520.	45,933.	30,550.	22,037.
8 Pension plan accruals and contributions (include section 401(k) and 403(b) employer contributions)				
9 Other employee benefits	826.	826.		
10 Payroll taxes	9,758.	4,489.	3,025.	2,244.
11 Fees for services (nonemployees):				
a Management				
b Legal				
c Accounting	7,000.		7,000.	
d Lobbying				
e Professional fundraising services. See Part IV, line 17				
f Investment management fees				
g Other. (If line 11g amount exceeds 10% of line 25, column (A), amount, list line 11g expenses on Sch O.)	34,113.	32,734.	1,013.	366.
12 Advertising and promotion	14,735.	14,735.		
13 Office expenses	7,903.	3,392.	4,511.	
14 Information technology				
15 Royalties				
16 Occupancy	32,770.	886.	30,999.	885.
17 Travel	128.		128.	
18 Payments of travel or entertainment expenses for any federal, state, or local public officials ...				
19 Conferences, conventions, and meetings				
20 Interest				
21 Payments to affiliates				
22 Depreciation, depletion, and amortization	480.		480.	
23 Insurance	11,793.	11,162.	631.	
24 Other expenses. Itemize expenses not covered above. (List miscellaneous expenses on line 24e. If line 24e amount exceeds 10% of line 25, column (A), amount, list line 24e expenses on Schedule O.)				
a PRODUCTION EXPENSES	129,152.	129,152.		
b DUES	2,814.	2,814.		
c DEVELOPMENT EXPENSES	685.			685.
d POSTAGE	205.		205.	
e All other expenses				
25 Total functional expenses. Add lines 1 through 24e	350,882.	246,123.	78,542.	26,217.
26 Joint costs. Complete this line only if the organization reported in column (B) joint costs from a combined educational campaign and fundraising solicitation. Check here <input type="checkbox"/> if following SOP 98-2 (ASC 958-720)				

Part X Balance Sheet

Check if Schedule O contains a response or note to any line in this Part X

		(A) Beginning of year		(B) End of year
Assets	1 Cash - non-interest-bearing	24,928.	1	14,246.
	2 Savings and temporary cash investments	6,179.	2	2,382.
	3 Pledges and grants receivable, net		3	
	4 Accounts receivable, net		4	
	5 Loans and other receivables from any current or former officer, director, trustee, key employee, creator or founder, substantial contributor, or 35% controlled entity or family member of any of these persons		5	
	6 Loans and other receivables from other disqualified persons (as defined under section 4958(f)(1)), and persons described in section 4958(c)(3)(B)		6	
	7 Notes and loans receivable, net		7	
	8 Inventories for sale or use		8	
	9 Prepaid expenses and deferred charges		9	
	10a Land, buildings, and equipment: cost or other basis. Complete Part VI of Schedule D	10a 23,299.		
	b Less: accumulated depreciation	10b 22,579.	1,200.	10c 720.
	11 Investments - publicly traded securities		11	
	12 Investments - other securities. See Part IV, line 11		12	
	13 Investments - program-related. See Part IV, line 11		13	
	14 Intangible assets		14	
	15 Other assets. See Part IV, line 11	1,000.	15	1,000.
16 Total assets. Add lines 1 through 15 (must equal line 33)	33,307.	16	18,348.	
Liabilities	17 Accounts payable and accrued expenses		17	7,475.
	18 Grants payable		18	
	19 Deferred revenue		19	
	20 Tax-exempt bond liabilities		20	
	21 Escrow or custodial account liability. Complete Part IV of Schedule D		21	
	22 Loans and other payables to any current or former officer, director, trustee, key employee, creator or founder, substantial contributor, or 35% controlled entity or family member of any of these persons		22	
	23 Secured mortgages and notes payable to unrelated third parties		23	
	24 Unsecured notes and loans payable to unrelated third parties		24	
	25 Other liabilities (including federal income tax, payables to related third parties, and other liabilities not included on lines 17-24). Complete Part X of Schedule D		25	
	26 Total liabilities. Add lines 17 through 25	0.	26	7,475.
Net Assets or Fund Balances	Organizations that follow FASB ASC 958, check here <input checked="" type="checkbox"/> and complete lines 27, 28, 32, and 33.			
	27 Net assets without donor restrictions	6,407.	27	-5,501.
	28 Net assets with donor restrictions	26,900.	28	16,374.
	Organizations that do not follow FASB ASC 958, check here <input type="checkbox"/> and complete lines 29 through 33.			
	29 Capital stock or trust principal, or current funds		29	
	30 Paid-in or capital surplus, or land, building, or equipment fund		30	
	31 Retained earnings, endowment, accumulated income, or other funds		31	
	32 Total net assets or fund balances	33,307.	32	10,873.
	33 Total liabilities and net assets/fund balances	33,307.	33	18,348.

Part XI Reconciliation of Net Assets

Check if Schedule O contains a response or note to any line in this Part XI

1	Total revenue (must equal Part VIII, column (A), line 12)	1	328,448.
2	Total expenses (must equal Part IX, column (A), line 25)	2	350,882.
3	Revenue less expenses. Subtract line 2 from line 1	3	-22,434.
4	Net assets or fund balances at beginning of year (must equal Part X, line 32, column (A))	4	33,307.
5	Net unrealized gains (losses) on investments	5	
6	Donated services and use of facilities	6	
7	Investment expenses	7	
8	Prior period adjustments	8	
9	Other changes in net assets or fund balances (explain on Schedule O)	9	0.
10	Net assets or fund balances at end of year. Combine lines 3 through 9 (must equal Part X, line 32, column (B))	10	10,873.

Part XII Financial Statements and Reporting

Check if Schedule O contains a response or note to any line in this Part XII

- 1** Accounting method used to prepare the Form 990: Cash Accrual Other _____
If the organization changed its method of accounting from a prior year or checked "Other," explain on Schedule O.
- 2a** Were the organization's financial statements compiled or reviewed by an independent accountant?
If "Yes," check a box below to indicate whether the financial statements for the year were compiled or reviewed on a separate basis, consolidated basis, or both:
 Separate basis Consolidated basis Both consolidated and separate basis
- b** Were the organization's financial statements audited by an independent accountant?
If "Yes," check a box below to indicate whether the financial statements for the year were audited on a separate basis, consolidated basis, or both:
 Separate basis Consolidated basis Both consolidated and separate basis
- c** If "Yes" to line 2a or 2b, does the organization have a committee that assumes responsibility for oversight of the audit, review, or compilation of its financial statements and selection of an independent accountant?
If the organization changed either its oversight process or selection process during the tax year, explain on Schedule O.
- 3a** As a result of a federal award, was the organization required to undergo an audit or audits as set forth in the Uniform Guidance, 2 C.F.R. Part 200, Subpart F?
- b** If "Yes," did the organization undergo the required audit or audits? If the organization did not undergo the required audit or audits, explain why on Schedule O and describe any steps taken to undergo such audits

	Yes	No
2a		X
2b	X	
2c		X
3a		X
3b		

Part II Support Schedule for Organizations Described in Sections 170(b)(1)(A)(iv) and 170(b)(1)(A)(vi)

(Complete only if you checked the box on line 5, 7, or 8 of Part I or if the organization failed to qualify under Part III. If the organization fails to qualify under the tests listed below, please complete Part III.)

Section A. Public Support

Calendar year (or fiscal year beginning in)	(a) 2019	(b) 2020	(c) 2021	(d) 2022	(e) 2023	(f) Total
1 Gifts, grants, contributions, and membership fees received. (Do not include any "unusual grants.")	288,528.	177,631.	317,951.	421,526.	274,184.	1479820.
2 Tax revenues levied for the organization's benefit and either paid to or expended on its behalf						
3 The value of services or facilities furnished by a governmental unit to the organization without charge						
4 Total. Add lines 1 through 3	288,528.	177,631.	317,951.	421,526.	274,184.	1479820.
5 The portion of total contributions by each person (other than a governmental unit or publicly supported organization) included on line 1 that exceeds 2% of the amount shown on line 11, column (f)						641,378.
6 Public support. Subtract line 5 from line 4.						838,442.

Section B. Total Support

Calendar year (or fiscal year beginning in)	(a) 2019	(b) 2020	(c) 2021	(d) 2022	(e) 2023	(f) Total
7 Amounts from line 4	288,528.	177,631.	317,951.	421,526.	274,184.	1479820.
8 Gross income from interest, dividends, payments received on securities loans, rents, royalties, and income from similar sources						
9 Net income from unrelated business activities, whether or not the business is regularly carried on						
10 Other income. Do not include gain or loss from the sale of capital assets (Explain in Part VI.)	16,178.	15,831.	16,700.	15,935.	22,817.	87,461.
11 Total support. Add lines 7 through 10						1567281.
12 Gross receipts from related activities, etc. (see instructions)					12	133,474.
13 First 5 years. If the Form 990 is for the organization's first, second, third, fourth, or fifth tax year as a section 501(c)(3) organization, check this box and stop here						<input type="checkbox"/>

Section C. Computation of Public Support Percentage

14 Public support percentage for 2023 (line 6, column (f), divided by line 11, column (f))	14	53.50	%
15 Public support percentage from 2022 Schedule A, Part II, line 14	15	52.65	%
16a 33 1/3% support test - 2023. If the organization did not check the box on line 13, and line 14 is 33 1/3% or more, check this box and stop here. The organization qualifies as a publicly supported organization			<input checked="" type="checkbox"/>
b 33 1/3% support test - 2022. If the organization did not check a box on line 13 or 16a, and line 15 is 33 1/3% or more, check this box and stop here. The organization qualifies as a publicly supported organization			<input type="checkbox"/>
17a 10% -facts-and-circumstances test - 2023. If the organization did not check a box on line 13, 16a, or 16b, and line 14 is 10% or more, and if the organization meets the facts-and-circumstances test, check this box and stop here. Explain in Part VI how the organization meets the facts-and-circumstances test. The organization qualifies as a publicly supported organization			<input type="checkbox"/>
b 10% -facts-and-circumstances test - 2022. If the organization did not check a box on line 13, 16a, 16b, or 17a, and line 15 is 10% or more, and if the organization meets the facts-and-circumstances test, check this box and stop here. Explain in Part VI how the organization meets the facts-and-circumstances test. The organization qualifies as a publicly supported organization			<input type="checkbox"/>
18 Private foundation. If the organization did not check a box on line 13, 16a, 16b, 17a, or 17b, check this box and see instructions			<input type="checkbox"/>

Part III Support Schedule for Organizations Described in Section 509(a)(2)

(Complete only if you checked the box on line 10 of Part I or if the organization failed to qualify under Part II. If the organization fails to qualify under the tests listed below, please complete Part II.)

Section A. Public Support

Table with 7 columns: (a) 2019, (b) 2020, (c) 2021, (d) 2022, (e) 2023, (f) Total. Rows include: 1 Gifts, grants, contributions, and membership fees received; 2 Gross receipts from admissions, merchandise sold or services performed; 3 Gross receipts from activities that are not an unrelated trade or business; 4 Tax revenues levied for the organization's benefit; 5 The value of services or facilities furnished by a governmental unit; 6 Total. Add lines 1 through 5; 7a Amounts included on lines 1, 2, and 3 received from disqualified persons; 7b Amounts included on lines 2 and 3 received from other than disqualified persons; 8 Public support. (Subtract line 7c from line 6.)

Section B. Total Support

Table with 7 columns: (a) 2019, (b) 2020, (c) 2021, (d) 2022, (e) 2023, (f) Total. Rows include: 9 Amounts from line 6; 10a Gross income from interest, dividends, payments received on securities loans, rents, royalties, and income from similar sources; 10b Unrelated business taxable income (less section 511 taxes) from businesses acquired after June 30, 1975; 10c Add lines 10a and 10b; 11 Net income from unrelated business activities not included on line 10b, whether or not the business is regularly carried on; 12 Other income. Do not include gain or loss from the sale of capital assets (Explain in Part VI.); 13 Total support. (Add lines 9, 10c, 11, and 12.)

14 First 5 years. If the Form 990 is for the organization's first, second, third, fourth, or fifth tax year as a section 501(c)(3) organization, check this box and stop here

Section C. Computation of Public Support Percentage

Table with 2 columns: Description, Percentage. Row 15: Public support percentage for 2023 (line 8, column (f), divided by line 13, column (f)) 15 %; Row 16: Public support percentage from 2022 Schedule A, Part III, line 15 16 %

Section D. Computation of Investment Income Percentage

Table with 2 columns: Description, Percentage. Row 17: Investment income percentage for 2023 (line 10c, column (f), divided by line 13, column (f)) 17 %; Row 18: Investment income percentage from 2022 Schedule A, Part III, line 17 18 %

19a 33 1/3% support tests - 2023. If the organization did not check the box on line 14, and line 15 is more than 33 1/3%, and line 17 is not more than 33 1/3%, check this box and stop here. The organization qualifies as a publicly supported organization

b 33 1/3% support tests - 2022. If the organization did not check a box on line 14 or line 19a, and line 16 is more than 33 1/3%, and line 18 is not more than 33 1/3%, check this box and stop here. The organization qualifies as a publicly supported organization

20 Private foundation. If the organization did not check a box on line 14, 19a, or 19b, check this box and see instructions

Part IV Supporting Organizations

(Complete only if you checked a box on line 12 of Part I. If you checked box 12a, Part I, complete Sections A and B. If you checked box 12b, Part I, complete Sections A and C. If you checked box 12c, Part I, complete Sections A, D, and E. If you checked box 12d, Part I, complete Sections A and D, and complete Part V.)

Section A. All Supporting Organizations

	Yes	No
1 Are all of the organization's supported organizations listed by name in the organization's governing documents? <i>If "No," describe in Part VI how the supported organizations are designated. If designated by class or purpose, describe the designation. If historic and continuing relationship, explain.</i>		
2 Did the organization have any supported organization that does not have an IRS determination of status under section 509(a)(1) or (2)? <i>If "Yes," explain in Part VI how the organization determined that the supported organization was described in section 509(a)(1) or (2).</i>		
3a Did the organization have a supported organization described in section 501(c)(4), (5), or (6)? <i>If "Yes," answer lines 3b and 3c below.</i>		
b Did the organization confirm that each supported organization qualified under section 501(c)(4), (5), or (6) and satisfied the public support tests under section 509(a)(2)? <i>If "Yes," describe in Part VI when and how the organization made the determination.</i>		
c Did the organization ensure that all support to such organizations was used exclusively for section 170(c)(2)(B) purposes? <i>If "Yes," explain in Part VI what controls the organization put in place to ensure such use.</i>		
4a Was any supported organization not organized in the United States ("foreign supported organization")? <i>If "Yes," and if you checked box 12a or 12b in Part I, answer lines 4b and 4c below.</i>		
b Did the organization have ultimate control and discretion in deciding whether to make grants to the foreign supported organization? <i>If "Yes," describe in Part VI how the organization had such control and discretion despite being controlled or supervised by or in connection with its supported organizations.</i>		
c Did the organization support any foreign supported organization that does not have an IRS determination under sections 501(c)(3) and 509(a)(1) or (2)? <i>If "Yes," explain in Part VI what controls the organization used to ensure that all support to the foreign supported organization was used exclusively for section 170(c)(2)(B) purposes.</i>		
5a Did the organization add, substitute, or remove any supported organizations during the tax year? <i>If "Yes," answer lines 5b and 5c below (if applicable). Also, provide detail in Part VI, including (i) the names and EIN numbers of the supported organizations added, substituted, or removed; (ii) the reasons for each such action; (iii) the authority under the organization's organizing document authorizing such action; and (iv) how the action was accomplished (such as by amendment to the organizing document).</i>		
b Type I or Type II only. Was any added or substituted supported organization part of a class already designated in the organization's organizing document?		
c Substitutions only. Was the substitution the result of an event beyond the organization's control?		
6 Did the organization provide support (whether in the form of grants or the provision of services or facilities) to anyone other than (i) its supported organizations, (ii) individuals that are part of the charitable class benefited by one or more of its supported organizations, or (iii) other supporting organizations that also support or benefit one or more of the filing organization's supported organizations? <i>If "Yes," provide detail in Part VI.</i>		
7 Did the organization provide a grant, loan, compensation, or other similar payment to a substantial contributor (as defined in section 4958(c)(3)(C)), a family member of a substantial contributor, or a 35% controlled entity with regard to a substantial contributor? <i>If "Yes," complete Part I of Schedule L (Form 990).</i>		
8 Did the organization make a loan to a disqualified person (as defined in section 4958) not described on line 7? <i>If "Yes," complete Part I of Schedule L (Form 990).</i>		
9a Was the organization controlled directly or indirectly at any time during the tax year by one or more disqualified persons, as defined in section 4946 (other than foundation managers and organizations described in section 509(a)(1) or (2))? <i>If "Yes," provide detail in Part VI.</i>		
b Did one or more disqualified persons (as defined on line 9a) hold a controlling interest in any entity in which the supporting organization had an interest? <i>If "Yes," provide detail in Part VI.</i>		
c Did a disqualified person (as defined on line 9a) have an ownership interest in, or derive any personal benefit from, assets in which the supporting organization also had an interest? <i>If "Yes," provide detail in Part VI.</i>		
10a Was the organization subject to the excess business holdings rules of section 4943 because of section 4943(f) (regarding certain Type II supporting organizations, and all Type III non-functionally integrated supporting organizations)? <i>If "Yes," answer line 10b below.</i>		
b Did the organization have any excess business holdings in the tax year? <i>(Use Schedule C, Form 4720, to determine whether the organization had excess business holdings.)</i>		

Part IV Supporting Organizations (continued)

	Yes	No
11 Has the organization accepted a gift or contribution from any of the following persons?		
a A person who directly or indirectly controls, either alone or together with persons described on lines 11b and 11c below, the governing body of a supported organization?		
b A family member of a person described on line 11a above?		
c A 35% controlled entity of a person described on line 11a or 11b above? <i>If "Yes" to line 11a, 11b, or 11c, provide detail in Part VI.</i>		
11a		
11b		
11c		

Section B. Type I Supporting Organizations

	Yes	No
1 Did the governing body, members of the governing body, officers acting in their official capacity, or membership of one or more supported organizations have the power to regularly appoint or elect at least a majority of the organization's officers, directors, or trustees at all times during the tax year? <i>If "No," describe in Part VI how the supported organization(s) effectively operated, supervised, or controlled the organization's activities. If the organization had more than one supported organization, describe how the powers to appoint and/or remove officers, directors, or trustees were allocated among the supported organizations and what conditions or restrictions, if any, applied to such powers during the tax year.</i>		
2 Did the organization operate for the benefit of any supported organization other than the supported organization(s) that operated, supervised, or controlled the supporting organization? <i>If "Yes," explain in Part VI how providing such benefit carried out the purposes of the supported organization(s) that operated, supervised, or controlled the supporting organization.</i>		
1		
2		

Section C. Type II Supporting Organizations

	Yes	No
1 Were a majority of the organization's directors or trustees during the tax year also a majority of the directors or trustees of each of the organization's supported organization(s)? <i>If "No," describe in Part VI how control or management of the supporting organization was vested in the same persons that controlled or managed the supported organization(s).</i>		
1		

Section D. All Type III Supporting Organizations

	Yes	No
1 Did the organization provide to each of its supported organizations, by the last day of the fifth month of the organization's tax year, (i) a written notice describing the type and amount of support provided during the prior tax year, (ii) a copy of the Form 990 that was most recently filed as of the date of notification, and (iii) copies of the organization's governing documents in effect on the date of notification, to the extent not previously provided?		
2 Were any of the organization's officers, directors, or trustees either (i) appointed or elected by the supported organization(s) or (ii) serving on the governing body of a supported organization? <i>If "No," explain in Part VI how the organization maintained a close and continuous working relationship with the supported organization(s).</i>		
3 By reason of the relationship described on line 2, above, did the organization's supported organizations have a significant voice in the organization's investment policies and in directing the use of the organization's income or assets at all times during the tax year? <i>If "Yes," describe in Part VI the role the organization's supported organizations played in this regard.</i>		
1		
2		
3		

Section E. Type III Functionally Integrated Supporting Organizations

1 Check the box next to the method that the organization used to satisfy the Integral Part Test during the year (see instructions).			
a <input type="checkbox"/> The organization satisfied the Activities Test. Complete line 2 below.			
b <input type="checkbox"/> The organization is the parent of each of its supported organizations. Complete line 3 below.			
c <input type="checkbox"/> The organization supported a governmental entity. Describe in Part VI how you supported a governmental entity (see instructions).			
2 Activities Test. Answer lines 2a and 2b below.			
a Did substantially all of the organization's activities during the tax year directly further the exempt purposes of the supported organization(s) to which the organization was responsive? <i>If "Yes," then in Part VI identify those supported organizations and explain how these activities directly furthered their exempt purposes, how the organization was responsive to those supported organizations, and how the organization determined that these activities constituted substantially all of its activities.</i>			
b Did the activities described on line 2a, above, constitute activities that, but for the organization's involvement, one or more of the organization's supported organization(s) would have been engaged in? <i>If "Yes," explain in Part VI the reasons for the organization's position that its supported organization(s) would have engaged in these activities but for the organization's involvement.</i>			
3 Parent of Supported Organizations. Answer lines 3a and 3b below.			
a Did the organization have the power to regularly appoint or elect a majority of the officers, directors, or trustees of each of the supported organizations? <i>If "Yes" or "No" provide details in Part VI.</i>			
b Did the organization exercise a substantial degree of direction over the policies, programs, and activities of each of its supported organizations? <i>If "Yes," describe in Part VI the role played by the organization in this regard.</i>			
2a			
2b			
3a			
3b			

Part V Type III Non-Functionally Integrated 509(a)(3) Supporting Organizations

1 Check here if the organization satisfied the Integral Part Test as a qualifying trust on Nov. 20, 1970 (*explain in Part VI*). **See instructions.**
 All other Type III non-functionally integrated supporting organizations must complete Sections A through E.

Section A - Adjusted Net Income		(A) Prior Year	(B) Current Year (optional)
1	Net short-term capital gain	1	
2	Recoveries of prior-year distributions	2	
3	Other gross income (see instructions)	3	
4	Add lines 1 through 3.	4	
5	Depreciation and depletion	5	
6	Portion of operating expenses paid or incurred for production or collection of gross income or for management, conservation, or maintenance of property held for production of income (see instructions)	6	
7	Other expenses (see instructions)	7	
8	Adjusted Net Income (subtract lines 5, 6, and 7 from line 4)	8	

Section B - Minimum Asset Amount		(A) Prior Year	(B) Current Year (optional)
1	Aggregate fair market value of all non-exempt-use assets (see instructions for short tax year or assets held for part of year):		
a	Average monthly value of securities	1a	
b	Average monthly cash balances	1b	
c	Fair market value of other non-exempt-use assets	1c	
d	Total (add lines 1a, 1b, and 1c)	1d	
e	Discount claimed for blockage or other factors (<i>explain in detail in Part VI</i>):		
2	Acquisition indebtedness applicable to non-exempt-use assets	2	
3	Subtract line 2 from line 1d.	3	
4	Cash deemed held for exempt use. Enter 0.015 of line 3 (for greater amount, see instructions).	4	
5	Net value of non-exempt-use assets (subtract line 4 from line 3)	5	
6	Multiply line 5 by 0.035.	6	
7	Recoveries of prior-year distributions	7	
8	Minimum Asset Amount (add line 7 to line 6)	8	

Section C - Distributable Amount			Current Year
1	Adjusted net income for prior year (from Section A, line 8, column A)	1	
2	Enter 0.85 of line 1.	2	
3	Minimum asset amount for prior year (from Section B, line 8, column A)	3	
4	Enter greater of line 2 or line 3.	4	
5	Income tax imposed in prior year	5	
6	Distributable Amount. Subtract line 5 from line 4, unless subject to emergency temporary reduction (see instructions).	6	
7	<input type="checkbox"/> Check here if the current year is the organization's first as a non-functionally integrated Type III supporting organization (see instructions).		

Part V Type III Non-Functionally Integrated 509(a)(3) Supporting Organizations (continued)

Section D - Distributions		Current Year
1	Amounts paid to supported organizations to accomplish exempt purposes	1
2	Amounts paid to perform activity that directly furthers exempt purposes of supported organizations, in excess of income from activity	2
3	Administrative expenses paid to accomplish exempt purposes of supported organizations	3
4	Amounts paid to acquire exempt-use assets	4
5	Qualified set-aside amounts (prior IRS approval required - provide details in Part VI)	5
6	Other distributions (describe in Part VI). See instructions.	6
7	Total annual distributions. Add lines 1 through 6.	7
8	Distributions to attentive supported organizations to which the organization is responsive (provide details in Part VI). See instructions.	8
9	Distributable amount for 2023 from Section C, line 6	9
10	Line 8 amount divided by line 9 amount	10

Section E - Distribution Allocations (see instructions)	(i) Excess Distributions	(ii) Underdistributions Pre-2023	(iii) Distributable Amount for 2023
1	Distributable amount for 2023 from Section C, line 6		
2	Underdistributions, if any, for years prior to 2023 (reasonable cause required - explain in Part VI). See instructions.		
3	Excess distributions carryover, if any, to 2023		
a	From 2018		
b	From 2019		
c	From 2020		
d	From 2021		
e	From 2022		
f	Total of lines 3a through 3e		
g	Applied to underdistributions of prior years		
h	Applied to 2023 distributable amount		
i	Carryover from 2018 not applied (see instructions)		
j	Remainder. Subtract lines 3g, 3h, and 3i from line 3f.		
4	Distributions for 2023 from Section D, line 7: \$		
a	Applied to underdistributions of prior years		
b	Applied to 2023 distributable amount		
c	Remainder. Subtract lines 4a and 4b from line 4.		
5	Remaining underdistributions for years prior to 2023, if any. Subtract lines 3g and 4a from line 2. For result greater than zero, explain in Part VI. See instructions.		
6	Remaining underdistributions for 2023. Subtract lines 3h and 4b from line 1. For result greater than zero, explain in Part VI. See instructions.		
7	Excess distributions carryover to 2024. Add lines 3j and 4c.		
8	Breakdown of line 7:		
a	Excess from 2019		
b	Excess from 2020		
c	Excess from 2021		
d	Excess from 2022		
e	Excess from 2023		

Schedule B
(Form 990)

Department of the Treasury
Internal Revenue Service

Schedule of Contributors

Attach to Form 990, 990-EZ, or 990-PF.
Go to www.irs.gov/Form990 for the latest information.

OMB No. 1545-0047

2023

Name of the organization

AZUKA THEATRE COLLECTIVE

Employer identification number

23-3005982

Organization type (check one):

Filers of:

Section:

Form 990 or 990-EZ

501(c)(3) (enter number) organization

4947(a)(1) nonexempt charitable trust **not** treated as a private foundation

527 political organization

Form 990-PF

501(c)(3) exempt private foundation

4947(a)(1) nonexempt charitable trust treated as a private foundation

501(c)(3) taxable private foundation

Check if your organization is covered by the **General Rule** or a **Special Rule**.

Note: Only a section 501(c)(7), (8), or (10) organization can check boxes for both the General Rule and a Special Rule. See instructions.

General Rule

For an organization filing Form 990, 990-EZ, or 990-PF that received, during the year, contributions totaling \$5,000 or more (in money or property) from any one contributor. Complete Parts I and II. See instructions for determining a contributor's total contributions.

Special Rules

For an organization described in section 501(c)(3) filing Form 990 or 990-EZ that met the 33 1/3% support test of the regulations under sections 509(a)(1) and 170(b)(1)(A)(vi), that checked Schedule A (Form 990), Part II, line 13, 16a, or 16b, and that received from any one contributor, during the year, total contributions of the greater of **(1)** \$5,000; or **(2)** 2% of the amount on (i) Form 990, Part VIII, line 1h; or (ii) Form 990-EZ, line 1. Complete Parts I and II.

For an organization described in section 501(c)(7), (8), or (10) filing Form 990 or 990-EZ that received from any one contributor, during the year, total contributions of more than \$1,000 *exclusively* for religious, charitable, scientific, literary, or educational purposes, or for the prevention of cruelty to children or animals. Complete Parts I (entering "N/A" in column (b) instead of the contributor name and address), II, and III.

For an organization described in section 501(c)(7), (8), or (10) filing Form 990 or 990-EZ that received from any one contributor, during the year, contributions *exclusively* for religious, charitable, etc., purposes, but no such contributions totaled more than \$1,000. If this box is checked, enter here the total contributions that were received during the year for an *exclusively* religious, charitable, etc., purpose. Don't complete any of the parts unless the **General Rule** applies to this organization because it received *nonexclusively* religious, charitable, etc., contributions totaling \$5,000 or more during the year \$ _____

Caution: An organization that isn't covered by the General Rule and/or the Special Rules doesn't file Schedule B (Form 990), but it **must** answer "No" on Part IV, line 2, of its Form 990; or check the box on line H of its Form 990-EZ or on its Form 990-PF, Part I, line 2, to certify that it doesn't meet the filing requirements of Schedule B (Form 990).

For Paperwork Reduction Act Notice, see the instructions for Form 990, 990-EZ, or 990-PF.

Schedule B (Form 990) (2023)

Name of organization AZUKA THEATRE COLLECTIVE	Employer identification number 23-3005982
---	---

Part I Contributors (see instructions). Use duplicate copies of Part I if additional space is needed.

(a) No.	(b) Name, address, and ZIP + 4	(c) Total contributions	(d) Type of contribution
1	WILLIAM PENN FOUNDATION TWO LOGAN SQUARE PHILADELPHIA, PA 19102	\$ 78,000.	Person <input checked="" type="checkbox"/> Payroll <input type="checkbox"/> Noncash <input type="checkbox"/> (Complete Part II for noncash contributions.)
2	WYNCOTE FOUNDATION 1717 ARCH STREET PHILADELPHIA, PA 19108	\$ 30,000.	Person <input checked="" type="checkbox"/> Payroll <input type="checkbox"/> Noncash <input type="checkbox"/> (Complete Part II for noncash contributions.)
3	SCHUBERT FOUNDATION 234 W 44TH STREET NEW YORK, NY 10036	\$ 20,000.	Person <input checked="" type="checkbox"/> Payroll <input type="checkbox"/> Noncash <input type="checkbox"/> (Complete Part II for noncash contributions.)
4	JOANNE HARMELIN 525 RIGHTERS FERRY ROAD BALA CYNWYD, PA 19004	\$ 10,000.	Person <input checked="" type="checkbox"/> Payroll <input type="checkbox"/> Noncash <input type="checkbox"/> (Complete Part II for noncash contributions.)
5	PECO 2301 MARKET STREET PHILADELPHIA, PA 19103	\$ 9,000.	Person <input checked="" type="checkbox"/> Payroll <input type="checkbox"/> Noncash <input type="checkbox"/> (Complete Part II for noncash contributions.)
6	PHILADELPHIA CULTURAL FUND 30 SOUTH 15TH STREET PHILADELPHIA, PA 19102	\$ 20,369.	Person <input checked="" type="checkbox"/> Payroll <input type="checkbox"/> Noncash <input type="checkbox"/> (Complete Part II for noncash contributions.)

Name of organization AZUKA THEATRE COLLECTIVE	Employer identification number 23-3005982
---	---

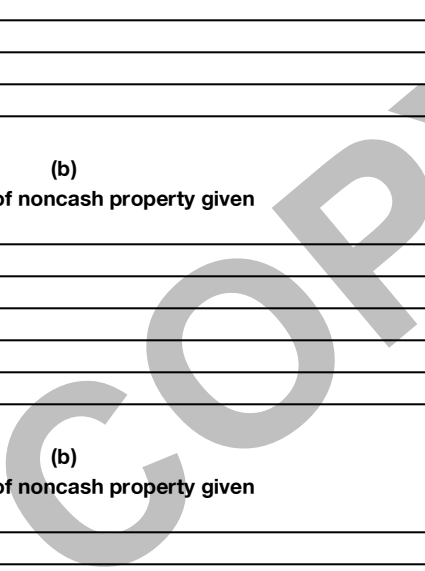
Part I Contributors (see instructions). Use duplicate copies of Part I if additional space is needed.

(a) No.	(b) Name, address, and ZIP + 4	(c) Total contributions	(d) Type of contribution
7	COMMONWEALTH OF PA 625 FORSTER STREET HARRISBURG, PA 17102	\$ 13,000.	Person <input checked="" type="checkbox"/> Payroll <input type="checkbox"/> Noncash <input type="checkbox"/> (Complete Part II for noncash contributions.)
8	SIMPATICO THEATRE 850 S. 2ND STREET PHILADELPHIA, PA 19148	\$ 25,000.	Person <input checked="" type="checkbox"/> Payroll <input type="checkbox"/> Noncash <input type="checkbox"/> (Complete Part II for noncash contributions.)
9	THE PHILADELPHIA FOUNDATION 1835 MARKET STREET PHILADELPHIA, PA 19103	\$ 20,800.	Person <input checked="" type="checkbox"/> Payroll <input type="checkbox"/> Noncash <input type="checkbox"/> (Complete Part II for noncash contributions.)
		\$ _____	Person <input type="checkbox"/> Payroll <input type="checkbox"/> Noncash <input type="checkbox"/> (Complete Part II for noncash contributions.)
		\$ _____	Person <input type="checkbox"/> Payroll <input type="checkbox"/> Noncash <input type="checkbox"/> (Complete Part II for noncash contributions.)
		\$ _____	Person <input type="checkbox"/> Payroll <input type="checkbox"/> Noncash <input type="checkbox"/> (Complete Part II for noncash contributions.)

Name of organization AZUKA THEATRE COLLECTIVE	Employer identification number 23-3005982
---	---

Part II Noncash Property (see instructions). Use duplicate copies of Part II if additional space is needed.

(a) No. from Part I	(b) Description of noncash property given	(c) FMV (or estimate) (See instructions.)	(d) Date received
		\$ _____	_____
		\$ _____	_____
		\$ _____	_____
		\$ _____	_____
		\$ _____	_____
		\$ _____	_____
		\$ _____	_____



Name of organization AZUKA THEATRE COLLECTIVE	Employer identification number 23-3005982
---	---

Part III Exclusively religious, charitable, etc., contributions to organizations described in section 501(c)(7), (8), or (10) that total more than \$1,000 for the year from any one contributor. Complete columns (a) through (e) and the following line entry. For organizations completing Part III, enter the total of exclusively religious, charitable, etc., contributions of **\$1,000 or less** for the year. (Enter this info. once.) \$ _____
Use duplicate copies of Part III if additional space is needed.

(a) No. from Part I	(b) Purpose of gift	(c) Use of gift	(d) Description of how gift is held
(e) Transfer of gift			
Transferee's name, address, and ZIP + 4		Relationship of transferor to transferee	
(a) No. from Part I	(b) Purpose of gift	(c) Use of gift	(d) Description of how gift is held
(e) Transfer of gift			
Transferee's name, address, and ZIP + 4		Relationship of transferor to transferee	
(a) No. from Part I	(b) Purpose of gift	(c) Use of gift	(d) Description of how gift is held
(e) Transfer of gift			
Transferee's name, address, and ZIP + 4		Relationship of transferor to transferee	
(a) No. from Part I	(b) Purpose of gift	(c) Use of gift	(d) Description of how gift is held
(e) Transfer of gift			
Transferee's name, address, and ZIP + 4		Relationship of transferor to transferee	

SCHEDULE D (Form 990)

Department of the Treasury Internal Revenue Service

Supplemental Financial Statements

Complete if the organization answered "Yes" on Form 990, Part IV, line 6, 7, 8, 9, 10, 11a, 11b, 11c, 11d, 11e, 11f, 12a, or 12b. Attach to Form 990.

Go to www.irs.gov/Form990 for instructions and the latest information.

OMB No. 1545-0047

2023

Open to Public Inspection

Name of the organization AZUKA THEATRE COLLECTIVE Employer identification number 23-3005982

Part I Organizations Maintaining Donor Advised Funds or Other Similar Funds or Accounts. Complete if the organization answered "Yes" on Form 990, Part IV, line 6.

Table with 3 columns: Question, (a) Donor advised funds, (b) Funds and other accounts. Rows include total number at end of year, aggregate value of contributions, grants, and end of year, and two yes/no questions about donor property and grant fund usage.

Part II Conservation Easements. Complete if the organization answered "Yes" on Form 990, Part IV, line 7.

Table with 3 columns: Question, (a) Donor advised funds, (b) Funds and other accounts. Rows include purpose of easements, total number and acreage, number of easements on historic structures, and monitoring expenses. Includes a sub-table for 'Held at the End of the Tax Year' with rows 2a-2d.

Part III Organizations Maintaining Collections of Art, Historical Treasures, or Other Similar Assets. Complete if the organization answered "Yes" on Form 990, Part IV, line 8.

Table with 3 columns: Question, (a) Donor advised funds, (b) Funds and other accounts. Rows include questions about reporting art and historical treasures, and amounts of revenue and assets.

Part III Organizations Maintaining Collections of Art, Historical Treasures, or Other Similar Assets (continued)

- 3 Using the organization's acquisition, accession, and other records, check any of the following that make significant use of its collection items (check all that apply).
- a Public exhibition
 - b Scholarly research
 - c Preservation for future generations
 - d Loan or exchange program
 - e Other _____
- 4 Provide a description of the organization's collections and explain how they further the organization's exempt purpose in Part XIII.
- 5 During the year, did the organization solicit or receive donations of art, historical treasures, or other similar assets to be sold to raise funds rather than to be maintained as part of the organization's collection? Yes No

Part IV Escrow and Custodial Arrangements Complete if the organization answered "Yes" on Form 990, Part IV, line 9, or reported an amount on Form 990, Part X, line 21.

- 1a Is the organization an agent, trustee, custodian, or other intermediary for contributions or other assets not included on Form 990, Part X? Yes No
- b If "Yes," explain the arrangement in Part XIII and complete the following table:
- | | Amount |
|---------------------------------|--------|
| c Beginning balance | 1c |
| d Additions during the year | 1d |
| e Distributions during the year | 1e |
| f Ending balance | 1f |
- 2a Did the organization include an amount on Form 990, Part X, line 21, for escrow or custodial account liability? Yes No
- b If "Yes," explain the arrangement in Part XIII. Check here if the explanation has been provided in Part XIII

Part V Endowment Funds Complete if the organization answered "Yes" on Form 990, Part IV, line 10.

	(a) Current year	(b) Prior year	(c) Two years back	(d) Three years back	(e) Four years back
1a Beginning of year balance					
b Contributions					
c Net investment earnings, gains, and losses					
d Grants or scholarships					
e Other expenditures for facilities and programs					
f Administrative expenses					
g End of year balance					

- 2 Provide the estimated percentage of the current year end balance (line 1g, column (a)) held as:
- a Board designated or quasi-endowment _____ %
 - b Permanent endowment _____ %
 - c Term endowment _____ %
- The percentages on lines 2a, 2b, and 2c should equal 100%.
- 3a Are there endowment funds not in the possession of the organization that are held and administered for the organization by:
- | | Yes | No |
|--|--------|----|
| (i) Unrelated organizations? | 3a(i) | |
| (ii) Related organizations? | 3a(ii) | |
| b If "Yes" on line 3a(ii), are the related organizations listed as required on Schedule R? | 3b | |
- 4 Describe in Part XIII the intended uses of the organization's endowment funds.

Part VI Land, Buildings, and Equipment Complete if the organization answered "Yes" on Form 990, Part IV, line 11a. See Form 990, Part X, line 10.

Description of property	(a) Cost or other basis (investment)	(b) Cost or other basis (other)	(c) Accumulated depreciation	(d) Book value
1a Land				
b Buildings				
c Leasehold improvements				
d Equipment		23,299.	22,579.	720.
e Other				
Total. Add lines 1a through 1e. (Column (d) must equal Form 990, Part X, line 10c, column (B))				720.

Part VII Investments - Other Securities

Complete if the organization answered "Yes" on Form 990, Part IV, line 11b. See Form 990, Part X, line 12.

(a) Description of security or category (including name of security)	(b) Book value	(c) Method of valuation: Cost or end-of-year market value
(1) Financial derivatives		
(2) Closely held equity interests		
(3) Other		
(A)		
(B)		
(C)		
(D)		
(E)		
(F)		
(G)		
(H)		
Total. (Col. (b) must equal Form 990, Part X, line 12, col. (B))		

Part VIII Investments - Program Related.

Complete if the organization answered "Yes" on Form 990, Part IV, line 11c. See Form 990, Part X, line 13.

(a) Description of investment	(b) Book value	(c) Method of valuation: Cost or end-of-year market value
(1)		
(2)		
(3)		
(4)		
(5)		
(6)		
(7)		
(8)		
(9)		
Total. (Col. (b) must equal Form 990, Part X, line 13, col. (B))		

Part IX Other Assets

Complete if the organization answered "Yes" on Form 990, Part IV, line 11d. See Form 990, Part X, line 15.

(a) Description	(b) Book value
(1) RENTAL DEPOSIT	1,000.
(2)	
(3)	
(4)	
(5)	
(6)	
(7)	
(8)	
(9)	
Total. (Column (b) must equal Form 990, Part X, line 15, col. (B))	1,000.

Part X Other Liabilities

Complete if the organization answered "Yes" on Form 990, Part IV, line 11e or 11f. See Form 990, Part X, line 25.

1. (a) Description of liability	(b) Book value
(1) Federal income taxes	
(2)	
(3)	
(4)	
(5)	
(6)	
(7)	
(8)	
(9)	
Total. (Column (b) must equal Form 990, Part X, line 25, col. (B))	

2. Liability for uncertain tax positions. In Part XIII, provide the text of the footnote to the organization's financial statements that reports the organization's liability for uncertain tax positions under FASB ASC 740. Check here if the text of the footnote has been provided in Part XIII ...

Part XI Reconciliation of Revenue per Audited Financial Statements With Revenue per Return

Complete if the organization answered "Yes" on Form 990, Part IV, line 12a.

1	Total revenue, gains, and other support per audited financial statements	1	329,648.
2	Amounts included on line 1 but not on Form 990, Part VIII, line 12:		
a	Net unrealized gains (losses) on investments	2a	
b	Donated services and use of facilities	2b	1,200.
c	Recoveries of prior year grants	2c	
d	Other (Describe in Part XIII.)	2d	
e	Add lines 2a through 2d	2e	1,200.
3	Subtract line 2e from line 1	3	328,448.
4	Amounts included on Form 990, Part VIII, line 12, but not on line 1:		
a	Investment expenses not included on Form 990, Part VIII, line 7b	4a	
b	Other (Describe in Part XIII.)	4b	
c	Add lines 4a and 4b	4c	0.
5	Total revenue. Add lines 3 and 4c . (This must equal Form 990, Part I, line 12.)	5	328,448.

Part XII Reconciliation of Expenses per Audited Financial Statements With Expenses per Return

Complete if the organization answered "Yes" on Form 990, Part IV, line 12a.

1	Total expenses and losses per audited financial statements	1	352,082.
2	Amounts included on line 1 but not on Form 990, Part IX, line 25:		
a	Donated services and use of facilities	2a	1,200.
b	Prior year adjustments	2b	
c	Other losses	2c	
d	Other (Describe in Part XIII.)	2d	
e	Add lines 2a through 2d	2e	1,200.
3	Subtract line 2e from line 1	3	350,882.
4	Amounts included on Form 990, Part IX, line 25, but not on line 1:		
a	Investment expenses not included on Form 990, Part VIII, line 7b	4a	
b	Other (Describe in Part XIII.)	4b	
c	Add lines 4a and 4b	4c	0.
5	Total expenses. Add lines 3 and 4c . (This must equal Form 990, Part I, line 18.)	5	350,882.

Part XIII Supplemental Information

Provide the descriptions required for Part II, lines 3, 5, and 9; Part III, lines 1a and 4; Part IV, lines 1b and 2b; Part V, line 4; Part X, line 2; Part XI, lines 2d and 4b; and Part XII, lines 2d and 4b. Also complete this part to provide any additional information.

PART XII, LINE 2D - OTHER ADJUSTMENTS:

ROUNDING

**SCHEDULE O
(Form 990)**

Department of the Treasury
Internal Revenue Service

Supplemental Information to Form 990 or 990-EZ

Complete to provide information for responses to specific questions on
Form 990 or 990-EZ or to provide any additional information.
Attach to Form 990 or Form 990-EZ.
Go to www.irs.gov/Form990 for the latest information.

OMB No. 1545-0047

2023

Open to Public
Inspection

Name of the organization

AZUKA THEATRE COLLECTIVE

Employer identification number

23-3005982

FORM 990, PART VI, SECTION A, LINE 8B:

THERE IS NO COMMITTEE TO ACT ON BEHALF OF THE BOARD.

FORM 990, PART VI, SECTION B, LINE 11B:

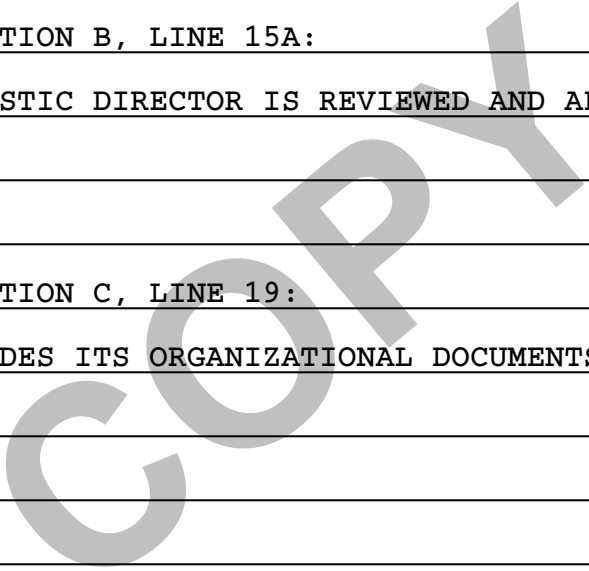
THE BOARD MEETS TO REVIEW THE 990 AND VOTES TO APPROVE THE 990 BEFORE IT IS
FILED.

FORM 990, PART VI, SECTION B, LINE 15A:

THE SALARY OF THE ARTISTIC DIRECTOR IS REVIEWED AND APPROVED BY THE BOARD
OF DIRECTORS.

FORM 990, PART VI, SECTION C, LINE 19:

THE ORGANIZATION PROVIDES ITS ORGANIZATIONAL DOCUMENTS AND FORM 990 UPON
REQUEST.



2023 DEPRECIATION AND AMORTIZATION REPORT

FORM 990 PAGE 10

990

Asset No.	Description	Date Acquired	Method	Life	Conv	Line No.	Unadjusted Cost Or Basis	Bus % Excl	Section 179 Expense	* Reduction In Basis	Basis For Depreciation	Beginning Accumulated Depreciation	Current Sec 179 Expense	Current Year Deduction	Ending Accumulated Depreciation
	MACHINERY & EQUIPMENT														
3	EQUIPMENT	04/16/09		5.00		HY16	4,238.				4,238.	4,238.		0.	4,238.
6	EQUIPMENT	04/22/10		5.00		HY16	8,934.				8,934.	8,934.		0.	8,934.
7	EQUIPMENT	10/19/11		5.00		HY16	500.				500.	500.		0.	500.
10	LIGHT BOARD	11/22/11		5.00		HY16	4,400.				4,400.	4,400.		0.	4,400.
16	EQUIPMENT BOXES	02/27/15		5.00		HY16	1,145.				1,145.	1,145.		0.	1,145.
	* 990 PAGE 10 TOTAL MACHINERY & EQUIPMENT						19,217.				19,217.	19,217.		0.	19,217.
	OTHER														
21	COPIER	05/24/22	200DB	5.00		MC17	2,500.				2,500.	1,300.		480.	1,780.
	* 990 PAGE 10 TOTAL OTHER						2,500.				2,500.	1,300.		480.	1,780.
	PROGRAM SERVICES														
17	DOWESER	05/01/15		5.00		HY16	465.				465.	465.		0.	465.
19	EQUIPMENT	04/13/16		5.00		MC16	1,117.				1,117.	1,117.		0.	1,117.
	* 990 PAGE 10 TOTAL PROGRAM SERVICES						1,582.				1,582.	1,582.		0.	1,582.
	* GRAND TOTAL 990 PAGE 10 DEPR						23,299.				23,299.	22,099.		480.	22,579.

**Application for Extension of Time To File an Exempt Organization
Return or Excise Taxes Related to Employee Benefit Plans**

Department of the Treasury
Internal Revenue Service

File a separate application for each return.
Go to www.irs.gov/Form8868 for the latest information.

Electronic filing (e-file). You can electronically file Form 8868 to request up to a 6-month extension of time to file any of the forms listed below except for Form 8870, Information Return for Transfers Associated With Certain Personal Benefit Contracts. An extension request for Form 8870 must be sent to the IRS in a paper format (see instructions). For more details on the electronic filing of Form 8868, visit www.irs.gov/e-file-providers/e-file-for-charities-and-non-profits.

Caution: If you are going to make an electronic funds withdrawal (direct debit) with this Form 8868, see Form 8453-TE and Form 8879-TE for payment instructions.

All corporations required to file an income tax return other than Form 990-T (including 1120-C filers), partnerships, REMICs, and trusts must use Form 7004 to request an extension of time to file income tax returns.

Part I - Identification

Type or Print	Name of exempt organization, employer, or other filer, see instructions. AZUKA THEATRE COLLECTIVE	Taxpayer identification number (TIN) 23-3005982
File by the due date for filing your return. See instructions.	Number, street, and room or suite no. If a P.O. box, see instructions. 1700 SANSOM STREET, 800	
	City, town or post office, state, and ZIP code. For a foreign address, see instructions. PHILADELPHIA, PA 19103	

Enter the Return Code for the return that this application is for (file a separate application for each return) 01

Application Is For	Return Code	Application Is For	Return Code
Form 990 or Form 990-EZ	01	Form 4720 (other than individual)	09
Form 4720 (individual)	03	Form 5227	10
Form 990-PF	04	Form 6069	11
Form 990-T (sec. 401(a) or 408(a) trust)	05	Form 8870	12
Form 990-T (trust other than above)	06	Form 5330 (individual)	13
Form 990-T (corporation)	07	Form 5330 (other than individual)	14
Form 1041-A	08		

• After you enter your Return Code, complete either Part II or Part III. Part III, including signature, is applicable only for an extension of time to file Form 5330.

• If this application is for an extension of time to file Form 5330, you must enter the following information.

Plan Name _____
 Plan Number _____
 Plan Year Ending (MM/DD/YYYY) _____

Part II - Automatic Extension of Time To File for Exempt Organizations (see instructions)

The books are in the care of **MANAGEMENT**
1700 SANSOM STREET #800 - PHILADELPHIA, PA 19103
 Telephone No. **2155631100** Fax No. _____

- If the organization does not have an office or place of business in the United States, check this box
- If this is for a Group Return, enter the organization's four-digit Group Exemption Number (GEN) _____. If this is for the whole group, check this box . If it is for part of the group, check this box and attach a list with the names and TINs of all members the extension is for.

1 I request an automatic 6-month extension of time until **MAY 15**, 20 **25**, to file the exempt organization return for the organization named above. The extension is for the organization's return for:
 calendar year 20 ____ or
 tax year beginning **JUL 1**, 20 **23**, and ending **JUN 30**, 20 **24**

2 If the tax year entered in line 1 is for less than 12 months, check reason: Initial return Final return
 Change in accounting period

3a If this application is for Forms 990-PF, 990-T, 4720, or 6069, enter the tentative tax, less any nonrefundable credits. See instructions.	3a	\$	0.
b If this application is for Forms 990-PF, 990-T, 4720, or 6069, enter any refundable credits and estimated tax payments made. Include any prior year overpayment allowed as a credit.	3b	\$	0.
c Balance due. Subtract line 3b from line 3a. Include your payment with this form, if required, by using EFTPS (Electronic Federal Tax Payment System). See instructions.	3c	\$	0.

For Privacy Act and Paperwork Reduction Act Notice, see instructions.

TAX RETURN FILING INSTRUCTIONS

PENNSYLVANIA FORM BCO-10

FOR THE YEAR ENDING

June 30, 2024

Prepared For:

Azuka Theatre Collective
1700 Sansom Street 800
Philadelphia, PA 19103

Prepared By:

Robert J. Kratz & Company
145 West Lancaster Avenue
Paoli, PA 19301

Amount of Tax:

Balance due of \$150

Make Check Payable To:

Commonwealth of Pennsylvania

Mail Tax Return To:

Pennsylvania Department of State
Bureau of Charitable Organizations
401 North St Rm 207
Harrisburg, PA 17120

Return Must Be Mailed On Or Before:

May 15, 2025

Special Instructions:

The report should be signed and dated by two board members

A completed and signed copy of the federal Form 990 (and all applicable attachments) and a copy of the audited financial statements must be included with Form BCO-10.

Mail to:

Pennsylvania Department of State
Bureau of Corporations and Charitable Organizations
401 North St Rm 207
Harrisburg, PA 17120

See www.dos.pa.gov/charities for more information

Charitable Organization Registration Statement

BCO-10 (rev. 11/2023)

Fee: See instructions

Certificate number: 37228
(N/A if initial registration)

Fiscal year ended: 06/30/2024
MM DD YYYY

FEIN: 23-3005982

If this is a voluntary registration, check and complete the applicable box(es). For a registration to be voluntary, at least one of the following must apply:

Organization is exempt from registration because

Organization does not solicit contributions in Pennsylvania

1. Legal name of organization: AZUKA THEATRE COLLECTIVE

Check if name change and give previous name _____

2. All other names used to solicit contributions: _____

3. Contact person: MARK ANDREWS Contact's e-mail: MARK@AZUKATHEATRE.ORG

4. Principal address of organization: _____ Mailing address (if different than principal address): _____

1700 SANSOM STREET, NO. 800

PHILADELPHIA

PA 19103

County: PHILADELPHIA

Phone number: 2155631100

800 number: _____

Fax number: _____

Email (if different than Contact's email): _____

Website: WWW.AZUKATHEATRE.ORG

Item 5 to be completed by initial registrants only

5. Type of organization (e.g. non-profit corporation, unincorporated association, etc.):
NON-PROFIT CORPORATION

Where established: PHILADELPHIA, PA.

Date established:* 12/01/1999

*Initial registrants must submit copies of organizational documents such as charter, articles of incorporation, constitution or other organizational instrument and by-laws.

AZUKA THEATRE COLLECTIVE

6. Name and addresses of all offices, chapters, branches, auxiliaries, affiliates or other subordinate units located in Pennsylvania, which share in the contributions or other revenue raised in the Commonwealth: (Attach a separate sheet if necessary)

Not Applicable

AZUKA THEATRE COLLECTIVE

1700 SANSOM STREET, PHILADELPHIA, PA 19103

2155631100

7. Short form registration applicability - Specified types of charitable organizations described in §162.7(a) of the Act may file a short form registration, which permits the organization to register without filing a financial report. Check the section that describes the organization. If the organization does not meet any of the criteria below for short form registration, check "Not Applicable":

§162.7(a)(1) - Persons or organizations which solicit contributions for the relief of a specific individual, when all of the contributions collected are turned over to the named beneficiary for his/her use without any deductions and provided that all contributions collected shall be held in trust

§162.7(a)(2) - Organizations which only solicit within the membership of the organization by other members of the organization. The term "membership" shall not include those persons who are granted a membership solely upon making a contribution as the result of solicitation. "Member" means a person having membership in a nonprofit corporation, or other organization, in accordance with the provisions of its articles of incorporation, bylaws or other instruments creating its form and organization and having bona fide rights and privileges in the organization such as the right to vote, to elect officers and directors, to hold office or position as ordinarily conferred on members of such organizations.

§162.7(a)(3) - Organizations which receive gross contributions of no more than \$25,000 per fiscal year whose fundraising activities are carried on only by volunteers, members, officers or permanent employees and only permanent employees are compensated for those fundraising activities

§162.7(a)(4) - Veterans organizations chartered under Federal law, organizations of volunteer firemen, ambulance associations, rescue squad associations and their auxiliaries or affiliates, which are not exempt from registration, did not receive gross contributions in excess of \$100,000 and did not use a professional solicitor.

Not Applicable

Charitable organizations which check boxes §162.7(a)(1) - §162.7(a)(4) are not required to file a financial report with this registration. If "Not Applicable" is checked, the charitable organization must submit financial reports which are audited, reviewed, compiled or internally prepared. See Instructions.

Items 8 and 9 are required to be completed by initial registrants only

8. Date organization first solicited contributions from Pennsylvania residents: _____
MM DD YYYY

Other _____

9. If organization solicited Pennsylvania residents and received gross* contributions totaling more than \$25,000 in any given fiscal year, provide the date the organization first received contributions totaling more than \$25,000.

MM DD YYYY

Other _____

*Includes contributions received both within and outside Pennsylvania before any deductions or expenses.

AZUKA THEATRE COLLECTIVE

10. Has the organization been granted IRS tax-exempt status? Yes No

A. If "Yes," under which IRS code section: 501(C)(3) and attach a copy of the IRS exemption letter if not previously submitted.

B. Has the organization's tax-exempt status ever been denied, revoked or modified? Yes No
(If "Yes," attach a copy of the denial, revocation or modification and subsequent reinstatement, if any, and if not previously submitted.)

11. Was the organization required to file any type of IRS 990 return, including 990, 990EZ, 990PF or 990N and applicable schedules, for its most recently completed fiscal year? Yes No

(If "Yes," attach a copy of the most recently filed 990, 990EZ, 990PF or 990N and include all schedules. If "No," attach an explanation of why the organization is exempt from filing an IRS 990 return. An organization that is not required to file an IRS 990 return or an organization that files a 990N, 990EZ or 990PF, must file a Pennsylvania public disclosure form (BCO-23).)

12. Manner in which contributions are solicited (e.g. direct mail, telephone, internet, social media, etc.):

Does not solicit contributions

GRANT SOLICITATIONS, MAIL SOLICITATIONS, FUNDRAISERS

13. A clear description of the specific programs for which contributions are used or will be used, and a statement describing whether such programs are planned or in existence.

DONATIONS ARE USED TO PRODUCE THEATRICAL PRODUCTIONS AND PRODUCTIONS FOR THE FUTURE.

14. Is the organization registered to solicit contributions in any other state or municipality?

Yes No (If "Yes," list all states and municipalities. Attach a separate sheet if necessary.)

15. Is any person compensated, or does the organization intend to compensate any person, who solicits contributions in Pennsylvania, including, but not limited to, employees of the organization and professional solicitors? (Do not check "Yes" if the organizations only uses or intend to only use a professional fundraising counsel.) Yes No

If "Yes," give the date the person or entity started or will start soliciting contributions from Pennsylvania residents: _____
Month Day Year

16. Names, addresses, and telephone numbers of all professional solicitors the organization uses or intends to use to solicit contributions from Pennsylvania residents. For each entry, include the beginning and ending dates of all contracts and dates Pennsylvania residents were first solicited, or will be solicited: (Attach a separate sheet if necessary)

Not Applicable

SEE STATEMENT 1

AZUKA THEATRE COLLECTIVE

17. Names, addresses, and telephone numbers of all professional fundraising counsel the organizations uses or intends to use to provide services with respect to the solicitation of contributions from Pennsylvania residents. For each entry, include the beginning and ending dates of all contracts and dates services began, or will begin, with respect to soliciting contributions from Pennsylvania residents: (Attach a separate sheet if necessary)

Not Applicable

SEE STATEMENT 2

18. Names, addresses, and telephone numbers of any commercial coventurers under contract with the organization: (Attach a separate sheet if necessary)

Not Applicable

NONE

19. If the registering charity is a parent organization located in Pennsylvania, does the organization elect to file a combined registration covering all of its Pennsylvania affiliates?

(See note "Affiliate and Parent Organization") Yes No Not Applicable

If "Yes," give all names and certificate numbers of the affiliate organizations:
(Each affiliate whose parent organization files an IRS 990 group return must submit a copy of the parent organization's 990 group return and file a public disclosure form (BCO-23) for each affiliate.)

20. Is the registering charity a Pennsylvania affiliate of a parent organization, which elected to file a combined registration on the registering charity's behalf? (See note "Affiliate and Parent Organization")

Yes No Not Applicable

If "Yes," provide the name and, if available, certificate number of the parent organization.
(Each affiliate whose parent organization files an IRS 990 group return must submit a copy of the parent organization's 990 group return and file a public disclosure form (BCO-23) for each affiliate.)

Legal name of parent organization

Pennsylvania certificate number

21. Provide the names and addresses of all officers, directors, trustees and principal salaried executive staff officers. (Attach separate sheet if necessary. A reference to the 990 or the BCO-23 is not sufficient.)

SEE STATEMENT 3

AZUKA THEATRE COLLECTIVE**22.** Names of the individuals or officers of the organization who: (Attach a separate sheet if necessary)

A. Are in charge of solicitation activities:

MARK ANDREWS1700 SANSOM STREET PHILADELPHIA, PA 19103

B. Have final responsibility for the custody of contributions:

MARK ANDREWS1700 SANSOM STREET PHILADELPHIA, PA 19103

C. Have final responsibility for final distribution of contributions:

MARK ANDREWS1700 SANSOM STREET PHILADELPHIA, PA 19103

D. Are responsible for custody of financial records:

MARK ANDREWS1700 SANSOM STREET PHILADELPHIA, PA 19103**23.** Are any officers, directors, trustees, or employees related by blood, marriage, or adoption to:A. Any other officer, director, trustee, or employee? Yes NoB. Any officer, agent, or employee of any professional fundraising counsel or solicitor under contract with organization? ** Yes NoC. Any officers, agents or employees of any supplier or vendor providing goods or services? **
 Yes No

**(this includes any officer, director, trustee, or employee of the charitable organization who is also an officer, director, trustee, employee or owner of a professional fundraising counsel, professional solicitor, supplier or vendor)

If "Yes" is checked to any of the above, attach a list of related individuals including names, business, and residence addresses of related parties.

24. Has the organization or any of its present officers, directors, executive personnel or trustees ever:A. Been found to have engaged in unlawful practices in the solicitation of contributions or administration of charitable assets or been enjoined from soliciting contributions or currently has such proceedings pending in this or any other jurisdiction? Yes NoB. Had its registration or license to solicit contributions denied, suspended, or revoked by any governmental agency?
 Yes NoC. Entered into any legally enforceable agreement (such as a consent agreement, an assurance of voluntary compliance or discontinuance or any similar agreement) with any district attorney, Office of Attorney General, or other local or state governmental agency? Yes No

(If "Yes" is checked in response to any of the above, attach a written explanation, including the reasons for actions, and copies of all relevant documents.)

AZUKA THEATRE COLLECTIVE

Certification - This registration statement must be signed by two different officers of the organization, one of whom shall be the chief fiscal officer or the equivalent.

I certify that the information provided in this registration, including all statements and attached documentation, is true and correct to the best of my knowledge, information and belief. I understand that the falsification of any statement or documentation made is subject to the penalties of 18 Pa.C.S. §4904 (relating to unsworn falsification to authorities) and 10 P.S. §162.17 (relating to administrative enforcement and penalties).

Signature of Chief Fiscal Officer

Date

LEE PORTER, BOARD PRESIDENT

Type or print name and title of Chief Fiscal Officer

Signature of Other Authorized Officer

Date

Type or print name and title of Other Authorized Officer

Checklist for registration:

- Completed registration statement properly signed and dated.
- A copy of the IRS 990/990EZ/990PF/990N Return and required schedules, signed and dated by an authorized officer
- Public Disclosure Form BCO-23 (if required)
- Applicable Financial Statements (audited, reviewed, compiled or internally prepared)
- Registration fee and any late filing fees
- Initial Registrants Only: IRS determination letter, articles of incorporation or charter and by-laws.

See Instructions for more information on completing this form and attachments.

FORM BCO-10

ALL PROFESSIONAL SOLICITORS

STATEMENT 1

NAME AND ADDRESS

PHONE NUMBER

NONE

CONTRACT BEGIN DATE

CONTRACT END DATE

SOLICIT DATE

FORM BCO-10

PROFESSIONAL FUNDRAISING COUNSELS

STATEMENT 2

NAME AND ADDRESS

PHONE NUMBER

NONE

CONTRACT BEGIN DATE

CONTRACT END DATE

SERVICE DATE

COPY

NAME AND ADDRESSTITLE

LEE PORTER
1700 STRATFORD AVE
STRATFORD, CT 06615

BOARD PRESIDENT

NAME AND ADDRESSTITLE

STEVEN WRIGHT
2322 GREENWICH STREET
PHILADELPHIA, PA 19146

DIRECTOR

NAME AND ADDRESSTITLE

DUSTIN DOVE
165 TOWNSHIP LINE ROAD
JENKINTOWN, PA 19046

BOARD VICE PRESIDENT

NAME AND ADDRESSTITLE

KIMBERLY ENGEL
1151 N 3RD STREET
PHILADELPHIA, PA 19123

DIRECTOR

NAME AND ADDRESSTITLE

LARRY FOWLER
1612 E. MT. PLEASANT AVE
PHILADELPHIA, PA 19150

SECRETARY

NAME AND ADDRESSTITLE

ROSIE MCNAMARA-JONES
423 LIBINGSTON STREET
PHILADELPHIA, PA 19126

TREASURER

NAME AND ADDRESSTITLE

KATE MEREDITH ESPOSITO
118 S. 21ST STREET
PHILADELPHIA, PA 19103

DIRECTOR

Return of Organization Exempt From Income Tax

Form 990

Under section 501(c), 527, or 4947(a)(1) of the Internal Revenue Code (except private foundations)
Do not enter social security numbers on this form as it may be made public.
Go to www.irs.gov/Form990 for instructions and the latest information.

2023
Open to Public Inspection

A For the 2023 calendar year, or tax year beginning JUL 1, 2023 and ending JUN 30, 2024

B Check if applicable: C Name of organization AZUKA THEATRE COLLECTIVE
D Employer identification number 23-3005982
E Telephone number 2155631100
G Gross receipts \$ 328,448.
H(a) Is this a group return for subordinates?
H(b) Are all subordinates included?
I Tax-exempt status:
J Website: WWW.AZUKATHEATRE.ORG
K Form of organization:
L Year of formation: 1999
M State of legal domicile: PA

Part I Summary

Table with 3 columns: Description, Prior Year, Current Year. Rows include: 1 Briefly describe the organization's mission... 2 Check this box... 3-7a Governance metrics... 8-12 Revenue... 13-19 Expenses... 20-22 Net Assets or Fund Balances.

Part II Signature Block

Under penalties of perjury, I declare that I have examined this return, including accompanying schedules and statements, and to the best of my knowledge and belief, it is true, correct, and complete.

Sign Here: Signature of officer LEE PORTER, BOARD PRESIDENT
Date
Paid: Print/Type preparer's name EDWARD R. SWIFT, CPA
Preparer Use Only: Firm's name ROBERT J. KRATZ & COMPANY, Firm's address PAOLI, PA 19301

May the IRS discuss this return with the preparer shown above? See instructions [X] Yes [] No

Part III Statement of Program Service Accomplishments

Check if Schedule O contains a response or note to any line in this Part III []

1 Briefly describe the organization's mission: AZUKA THEATRE STRENGTHENS THE CONNECTION AND SHARED HUMANITY AMONG ITS DIVERSE AUDIENCES BY GIVING VOICE TO THE PEOPLE WHOSE STORIES GO UNHEARD.

2 Did the organization undertake any significant program services during the year which were not listed on the prior Form 990 or 990-EZ? [] Yes [X] No

3 Did the organization cease conducting, or make significant changes in how it conducts, any program services? [] Yes [X] No

4 Describe the organization's program service accomplishments for each of its three largest program services, as measured by expenses. Section 501(c)(3) and 501(c)(4) organizations are required to report the amount of grants and allocations to others, the total expenses, and revenue, if any, for each program service reported.

4a (Code:) (Expenses \$ 246,123. including grants of \$) (Revenue \$ 31,444.) THE COMPANY REACHED ITS GOALS THIS SEASON WITH 3 THEATRICAL PRODUCTIONS TO AN AUDIENCE OF MORE THAN 2,100.

4b (Code:) (Expenses \$ including grants of \$) (Revenue \$)

4c (Code:) (Expenses \$ including grants of \$) (Revenue \$)

4d Other program services (Describe on Schedule O.) (Expenses \$ including grants of \$) (Revenue \$)

4e Total program service expenses 246,123.

Part IV Checklist of Required Schedules

	Yes	No
1 Is the organization described in section 501(c)(3) or 4947(a)(1) (other than a private foundation)? <i>If "Yes," complete Schedule A</i>	X	
2 Is the organization required to complete <i>Schedule B, Schedule of Contributors</i> ? See instructions	X	
3 Did the organization engage in direct or indirect political campaign activities on behalf of or in opposition to candidates for public office? <i>If "Yes," complete Schedule C, Part I</i>		X
4 Section 501(c)(3) organizations. Did the organization engage in lobbying activities, or have a section 501(h) election in effect during the tax year? <i>If "Yes," complete Schedule C, Part II</i>		X
5 Is the organization a section 501(c)(4), 501(c)(5), or 501(c)(6) organization that receives membership dues, assessments, or similar amounts as defined in Rev. Proc. 98-19? <i>If "Yes," complete Schedule C, Part III</i>		X
6 Did the organization maintain any donor advised funds or any similar funds or accounts for which donors have the right to provide advice on the distribution or investment of amounts in such funds or accounts? <i>If "Yes," complete Schedule D, Part I</i>		X
7 Did the organization receive or hold a conservation easement, including easements to preserve open space, the environment, historic land areas, or historic structures? <i>If "Yes," complete Schedule D, Part II</i>		X
8 Did the organization maintain collections of works of art, historical treasures, or other similar assets? <i>If "Yes," complete Schedule D, Part III</i>		X
9 Did the organization report an amount in Part X, line 21, for escrow or custodial account liability; serve as a custodian for amounts not listed in Part X; or provide credit counseling, debt management, credit repair, or debt negotiation services? <i>If "Yes," complete Schedule D, Part IV</i>		X
10 Did the organization, directly or through a related organization, hold assets in donor-restricted endowments or in quasi-endowments? <i>If "Yes," complete Schedule D, Part V</i>		X
11 If the organization's answer to any of the following questions is "Yes," then complete Schedule D, Parts VI, VII, VIII, IX, or X, as applicable.		
a Did the organization report an amount for land, buildings, and equipment in Part X, line 10? <i>If "Yes," complete Schedule D, Part VI</i>	X	
b Did the organization report an amount for investments - other securities in Part X, line 12, that is 5% or more of its total assets reported in Part X, line 16? <i>If "Yes," complete Schedule D, Part VII</i>		X
c Did the organization report an amount for investments - program related in Part X, line 13, that is 5% or more of its total assets reported in Part X, line 16? <i>If "Yes," complete Schedule D, Part VIII</i>		X
d Did the organization report an amount for other assets in Part X, line 15, that is 5% or more of its total assets reported in Part X, line 16? <i>If "Yes," complete Schedule D, Part IX</i>	X	
e Did the organization report an amount for other liabilities in Part X, line 25? <i>If "Yes," complete Schedule D, Part X</i>		X
f Did the organization's separate or consolidated financial statements for the tax year include a footnote that addresses the organization's liability for uncertain tax positions under FIN 48 (ASC 740)? <i>If "Yes," complete Schedule D, Part X</i>		X
12a Did the organization obtain separate, independent audited financial statements for the tax year? <i>If "Yes," complete Schedule D, Parts XI and XII</i>	X	
b Was the organization included in consolidated, independent audited financial statements for the tax year? <i>If "Yes," and if the organization answered "No" to line 12a, then completing Schedule D, Parts XI and XII is optional</i>		X
13 Is the organization a school described in section 170(b)(1)(A)(ii)? <i>If "Yes," complete Schedule E</i>		X
14a Did the organization maintain an office, employees, or agents outside of the United States?		X
b Did the organization have aggregate revenues or expenses of more than \$10,000 from grantmaking, fundraising, business, investment, and program service activities outside the United States, or aggregate foreign investments valued at \$100,000 or more? <i>If "Yes," complete Schedule F, Parts I and IV</i>		X
15 Did the organization report on Part IX, column (A), line 3, more than \$5,000 of grants or other assistance to or for any foreign organization? <i>If "Yes," complete Schedule F, Parts II and IV</i>		X
16 Did the organization report on Part IX, column (A), line 3, more than \$5,000 of aggregate grants or other assistance to or for foreign individuals? <i>If "Yes," complete Schedule F, Parts III and IV</i>		X
17 Did the organization report a total of more than \$15,000 of expenses for professional fundraising services on Part IX, column (A), lines 6 and 11e? <i>If "Yes," complete Schedule G, Part I.</i> See instructions		X
18 Did the organization report more than \$15,000 total of fundraising event gross income and contributions on Part VIII, lines 1c and 8a? <i>If "Yes," complete Schedule G, Part II</i>		X
19 Did the organization report more than \$15,000 of gross income from gaming activities on Part VIII, line 9a? <i>If "Yes," complete Schedule G, Part III</i>		X
20a Did the organization operate one or more hospital facilities? <i>If "Yes," complete Schedule H</i>		X
b If "Yes" to line 20a, did the organization attach a copy of its audited financial statements to this return?		
21 Did the organization report more than \$5,000 of grants or other assistance to any domestic organization or domestic government on Part IX, column (A), line 1? <i>If "Yes," complete Schedule I, Parts I and II</i>		X

Part IV Checklist of Required Schedules (continued)

Table with 3 columns: Question number, Yes, No. Rows 22-38. Includes questions about grants, compensation, tax-exempt bonds, excess benefit transactions, and noncash contributions.

Part V Statements Regarding Other IRS Filings and Tax Compliance

Check if Schedule O contains a response or note to any line in this Part V

Table with 3 columns: Question number, Yes, No. Rows 1a, 1b, 1c. Includes questions about Form 1096, Forms W-2G, and backup withholding rules.

Part V Statements Regarding Other IRS Filings and Tax Compliance (continued)

Table with columns for question number, question text, and Yes/No response boxes. Includes questions 2a through 17 regarding employee reporting, tax returns, gross income, foreign accounts, prohibited transactions, and charitable contributions.

Part VI Governance, Management, and Disclosure. For each "Yes" response to lines 2 through 7b below, and for a "No" response to line 8a, 8b, or 10b below, describe the circumstances, processes, or changes on Schedule O. See instructions.

Check if Schedule O contains a response or note to any line in this Part VI [X]

Section A. Governing Body and Management

Table with 3 columns: Question, Yes, No. Rows include: 1a (10), 1b (9), 2 (X), 3 (X), 4 (X), 5 (X), 6 (X), 7a (X), 7b (X), 8a (X), 8b (X), 9 (X).

Section B. Policies (This Section B requests information about policies not required by the Internal Revenue Code.)

Table with 3 columns: Question, Yes, No. Rows include: 10a (X), 10b, 11a (X), 11b, 12a (X), 12b, 12c, 13 (X), 14 (X), 15a (X), 15b (X), 16a (X), 16b.

Section C. Disclosure

- 17 List the states with which a copy of this Form 990 is required to be filed PA
18 Section 6104 requires an organization to make its Forms 1023 (1024 or 1024-A, if applicable), 990, and 990-T (section 501(c)(3)s only) available for public inspection.
19 Describe on Schedule O whether (and if so, how) the organization made its governing documents, conflict of interest policy, and financial statements available to the public during the tax year.
20 State the name, address, and telephone number of the person who possesses the organization's books and records
MANAGEMENT - 2155631100
1700 SANSOM STREET #800, PHILADELPHIA, PA 19103

Part VIII Statement of Revenue

Check if Schedule O contains a response or note to any line in this Part VIII

			(A)	(B)	(C)	(D)	
			Total revenue	Related or exempt function revenue	Unrelated business revenue	Revenue excluded from tax under sections 512 - 514	
Contributions, Gifts, Grants and Other Similar Amounts	1 a Federated campaigns	1a					
	b Membership dues	1b					
	c Fundraising events	1c					
	d Related organizations	1d					
	e Government grants (contributions)	1e	33,369.				
	f All other contributions, gifts, grants, and similar amounts not included above ...	1f	240,815.				
	g Noncash contributions included in lines 1a-1f	1g	\$				
	h Total. Add lines 1a-1f			274,184.			
Program Service Revenue	2 a <u>TICKET REVENUE</u>	Business Code					
		711110	31,444.	31,444.			
	b _____						
	c _____						
	d _____						
	e _____						
	f All other program service revenue						
g Total. Add lines 2a-2f			31,444.				
Other Revenue	3 Investment income (including dividends, interest, and other similar amounts)		3.			3.	
	4 Income from investment of tax-exempt bond proceeds						
	5 Royalties						
	6 a Gross rents	6a	(i) Real	17,155.			
			(ii) Personal				
	b Less: rental expenses ...	6b	0.				
	c Rental income or (loss)	6c	17,155.				
	d Net rental income or (loss)			17,155.		17,155.	
	7 a Gross amount from sales of assets other than inventory	7a	(i) Securities				
			(ii) Other				
	b Less: cost or other basis and sales expenses	7b					
	c Gain or (loss)	7c					
d Net gain or (loss)							
8 a Gross income from fundraising events (not including \$ _____ of contributions reported on line 1c). See Part IV, line 18	8a						
b Less: direct expenses	8b						
c Net income or (loss) from fundraising events							
9 a Gross income from gaming activities. See Part IV, line 19	9a						
b Less: direct expenses	9b						
c Net income or (loss) from gaming activities							
10 a Gross sales of inventory, less returns and allowances	10a						
b Less: cost of goods sold	10b						
c Net income or (loss) from sales of inventory							
Miscellaneous Revenue	11 a <u>MISCELLANEOUS</u>	Business Code					
		900099	5,662.			5,662.	
	b _____						
	c _____						
	d All other revenue						
e Total. Add lines 11a-11d			5,662.				
12 Total revenue. See instructions			328,448.	31,444.	0.	22,820.	

Part IX Statement of Functional Expenses

Section 501(c)(3) and 501(c)(4) organizations must complete all columns. All other organizations must complete column (A).

Check if Schedule O contains a response or note to any line in this Part IX

Do not include amounts reported on lines 6b, 7b, 8b, 9b, and 10b of Part VIII.	(A) Total expenses	(B) Program service expenses	(C) Management and general expenses	(D) Fundraising expenses
1 Grants and other assistance to domestic organizations and domestic governments. See Part IV, line 21 ...				
2 Grants and other assistance to domestic individuals. See Part IV, line 22				
3 Grants and other assistance to foreign organizations, foreign governments, and foreign individuals. See Part IV, lines 15 and 16				
4 Benefits paid to or for members				
5 Compensation of current officers, directors, trustees, and key employees				
6 Compensation not included above to disqualified persons (as defined under section 4958(f)(1)) and persons described in section 4958(c)(3)(B)				
7 Other salaries and wages	98,520.	45,933.	30,550.	22,037.
8 Pension plan accruals and contributions (include section 401(k) and 403(b) employer contributions)				
9 Other employee benefits	826.	826.		
10 Payroll taxes	9,758.	4,489.	3,025.	2,244.
11 Fees for services (nonemployees):				
a Management				
b Legal				
c Accounting	7,000.		7,000.	
d Lobbying				
e Professional fundraising services. See Part IV, line 17				
f Investment management fees				
g Other. (If line 11g amount exceeds 10% of line 25, column (A), amount, list line 11g expenses on Sch O.)	34,113.	32,734.	1,013.	366.
12 Advertising and promotion	14,735.	14,735.		
13 Office expenses	7,903.	3,392.	4,511.	
14 Information technology				
15 Royalties				
16 Occupancy	32,770.	886.	30,999.	885.
17 Travel	128.		128.	
18 Payments of travel or entertainment expenses for any federal, state, or local public officials ...				
19 Conferences, conventions, and meetings				
20 Interest				
21 Payments to affiliates				
22 Depreciation, depletion, and amortization	480.		480.	
23 Insurance	11,793.	11,162.	631.	
24 Other expenses. Itemize expenses not covered above. (List miscellaneous expenses on line 24e. If line 24e amount exceeds 10% of line 25, column (A), amount, list line 24e expenses on Schedule O.)				
a PRODUCTION EXPENSES	129,152.	129,152.		
b DUES	2,814.	2,814.		
c DEVELOPMENT EXPENSES	685.			685.
d POSTAGE	205.		205.	
e All other expenses				
25 Total functional expenses. Add lines 1 through 24e	350,882.	246,123.	78,542.	26,217.
26 Joint costs. Complete this line only if the organization reported in column (B) joint costs from a combined educational campaign and fundraising solicitation. Check here <input type="checkbox"/> if following SOP 98-2 (ASC 958-720)				

Part X Balance Sheet

Check if Schedule O contains a response or note to any line in this Part X

		(A) Beginning of year		(B) End of year
Assets	1 Cash - non-interest-bearing	24,928.	1	14,246.
	2 Savings and temporary cash investments	6,179.	2	2,382.
	3 Pledges and grants receivable, net		3	
	4 Accounts receivable, net		4	
	5 Loans and other receivables from any current or former officer, director, trustee, key employee, creator or founder, substantial contributor, or 35% controlled entity or family member of any of these persons		5	
	6 Loans and other receivables from other disqualified persons (as defined under section 4958(f)(1)), and persons described in section 4958(c)(3)(B)		6	
	7 Notes and loans receivable, net		7	
	8 Inventories for sale or use		8	
	9 Prepaid expenses and deferred charges		9	
	10a Land, buildings, and equipment: cost or other basis. Complete Part VI of Schedule D	10a 23,299.		
	b Less: accumulated depreciation	10b 22,579.	1,200.	10c 720.
	11 Investments - publicly traded securities		11	
	12 Investments - other securities. See Part IV, line 11		12	
	13 Investments - program-related. See Part IV, line 11		13	
	14 Intangible assets		14	
	15 Other assets. See Part IV, line 11	1,000.	15	1,000.
16 Total assets. Add lines 1 through 15 (must equal line 33)	33,307.	16	18,348.	
Liabilities	17 Accounts payable and accrued expenses		17	7,475.
	18 Grants payable		18	
	19 Deferred revenue		19	
	20 Tax-exempt bond liabilities		20	
	21 Escrow or custodial account liability. Complete Part IV of Schedule D		21	
	22 Loans and other payables to any current or former officer, director, trustee, key employee, creator or founder, substantial contributor, or 35% controlled entity or family member of any of these persons		22	
	23 Secured mortgages and notes payable to unrelated third parties		23	
	24 Unsecured notes and loans payable to unrelated third parties		24	
	25 Other liabilities (including federal income tax, payables to related third parties, and other liabilities not included on lines 17-24). Complete Part X of Schedule D		25	
	26 Total liabilities. Add lines 17 through 25	0.	26	7,475.
Net Assets or Fund Balances	Organizations that follow FASB ASC 958, check here <input checked="" type="checkbox"/> and complete lines 27, 28, 32, and 33.			
	27 Net assets without donor restrictions	6,407.	27	-5,501.
	28 Net assets with donor restrictions	26,900.	28	16,374.
	Organizations that do not follow FASB ASC 958, check here <input type="checkbox"/> and complete lines 29 through 33.			
	29 Capital stock or trust principal, or current funds		29	
	30 Paid-in or capital surplus, or land, building, or equipment fund		30	
	31 Retained earnings, endowment, accumulated income, or other funds		31	
	32 Total net assets or fund balances	33,307.	32	10,873.
	33 Total liabilities and net assets/fund balances	33,307.	33	18,348.

Part XI Reconciliation of Net Assets

Check if Schedule O contains a response or note to any line in this Part XI

1	Total revenue (must equal Part VIII, column (A), line 12)	1	328,448.
2	Total expenses (must equal Part IX, column (A), line 25)	2	350,882.
3	Revenue less expenses. Subtract line 2 from line 1	3	-22,434.
4	Net assets or fund balances at beginning of year (must equal Part X, line 32, column (A))	4	33,307.
5	Net unrealized gains (losses) on investments	5	
6	Donated services and use of facilities	6	
7	Investment expenses	7	
8	Prior period adjustments	8	
9	Other changes in net assets or fund balances (explain on Schedule O)	9	0.
10	Net assets or fund balances at end of year. Combine lines 3 through 9 (must equal Part X, line 32, column (B))	10	10,873.

Part XII Financial Statements and Reporting

Check if Schedule O contains a response or note to any line in this Part XII

- 1 Accounting method used to prepare the Form 990: Cash Accrual Other _____
If the organization changed its method of accounting from a prior year or checked "Other," explain on Schedule O.
- 2a Were the organization's financial statements compiled or reviewed by an independent accountant? _____
If "Yes," check a box below to indicate whether the financial statements for the year were compiled or reviewed on a separate basis, consolidated basis, or both:
 Separate basis Consolidated basis Both consolidated and separate basis
- b Were the organization's financial statements audited by an independent accountant? _____
If "Yes," check a box below to indicate whether the financial statements for the year were audited on a separate basis, consolidated basis, or both:
 Separate basis Consolidated basis Both consolidated and separate basis
- c If "Yes" to line 2a or 2b, does the organization have a committee that assumes responsibility for oversight of the audit, review, or compilation of its financial statements and selection of an independent accountant? _____
If the organization changed either its oversight process or selection process during the tax year, explain on Schedule O.
- 3a As a result of a federal award, was the organization required to undergo an audit or audits as set forth in the Uniform Guidance, 2 C.F.R. Part 200, Subpart F? _____
- b If "Yes," did the organization undergo the required audit or audits? If the organization did not undergo the required audit or audits, explain why on Schedule O and describe any steps taken to undergo such audits _____

	Yes	No
2a		X
2b	X	
2c		X
3a		X
3b		

SCHEDULE A
(Form 990)

Department of the Treasury
Internal Revenue Service

Public Charity Status and Public Support

Complete if the organization is a section 501(c)(3) organization or a section 4947(a)(1) nonexempt charitable trust.
Attach to Form 990 or Form 990-EZ.

Go to www.irs.gov/Form990 for instructions and the latest information.

OMB No. 1545-0047

2023

Open to Public Inspection

Name of the organization AZUKA THEATRE COLLECTIVE	Employer identification number 23-3005982
---	---

Part I Reason for Public Charity Status. (All organizations must complete this part.) See instructions.

The organization is not a private foundation because it is: (For lines 1 through 12, check only one box.)

- 1 A church, convention of churches, or association of churches described in **section 170(b)(1)(A)(i).**
- 2 A school described in **section 170(b)(1)(A)(ii).** (Attach Schedule E (Form 990).)
- 3 A hospital or a cooperative hospital service organization described in **section 170(b)(1)(A)(iii).**
- 4 A medical research organization operated in conjunction with a hospital described in **section 170(b)(1)(A)(iii).** Enter the hospital's name, city, and state: _____
- 5 An organization operated for the benefit of a college or university owned or operated by a governmental unit described in **section 170(b)(1)(A)(iv).** (Complete Part II.)
- 6 A federal, state, or local government or governmental unit described in **section 170(b)(1)(A)(v).**
- 7 An organization that normally receives a substantial part of its support from a governmental unit or from the general public described in **section 170(b)(1)(A)(vi).** (Complete Part II.)
- 8 A community trust described in **section 170(b)(1)(A)(vi).** (Complete Part II.)
- 9 An agricultural research organization described in **section 170(b)(1)(A)(ix)** operated in conjunction with a land-grant college or university or a non-land-grant college of agriculture (see instructions). Enter the name, city, and state of the college or university: _____
- 10 An organization that normally receives (1) more than 33 1/3% of its support from contributions, membership fees, and gross receipts from activities related to its exempt functions, subject to certain exceptions; and (2) no more than 33 1/3% of its support from gross investment income and unrelated business taxable income (less section 511 tax) from businesses acquired by the organization after June 30, 1975. See **section 509(a)(2).** (Complete Part III.)
- 11 An organization organized and operated exclusively to test for public safety. See **section 509(a)(4).**
- 12 An organization organized and operated exclusively for the benefit of, to perform the functions of, or to carry out the purposes of one or more publicly supported organizations described in **section 509(a)(1)** or **section 509(a)(2).** See **section 509(a)(3).** Check the box on lines 12a through 12d that describes the type of supporting organization and complete lines 12e, 12f, and 12g.
 - a **Type I.** A supporting organization operated, supervised, or controlled by its supported organization(s), typically by giving the supported organization(s) the power to regularly appoint or elect a majority of the directors or trustees of the supporting organization. **You must complete Part IV, Sections A and B.**
 - b **Type II.** A supporting organization supervised or controlled in connection with its supported organization(s), by having control or management of the supporting organization vested in the same persons that control or manage the supported organization(s). **You must complete Part IV, Sections A and C.**
 - c **Type III functionally integrated.** A supporting organization operated in connection with, and functionally integrated with, its supported organization(s) (see instructions). **You must complete Part IV, Sections A, D, and E.**
 - d **Type III non-functionally integrated.** A supporting organization operated in connection with its supported organization(s) that is not functionally integrated. The organization generally must satisfy a distribution requirement and an attentiveness requirement (see instructions). **You must complete Part IV, Sections A and D, and Part V.**
 - e Check this box if the organization received a written determination from the IRS that it is a Type I, Type II, Type III functionally integrated, or Type III non-functionally integrated supporting organization.
 - f Enter the number of supported organizations
- g Provide the following information about the supported organization(s).

(i) Name of supported organization	(ii) EIN	(iii) Type of organization (described on lines 1-10 above (see instructions))	(iv) Is the organization listed in your governing document?		(v) Amount of monetary support (see instructions)	(vi) Amount of other support (see instructions)
			Yes	No		
Total						

Part II Support Schedule for Organizations Described in Sections 170(b)(1)(A)(iv) and 170(b)(1)(A)(vi)

(Complete only if you checked the box on line 5, 7, or 8 of Part I or if the organization failed to qualify under Part III. If the organization fails to qualify under the tests listed below, please complete Part III.)

Section A. Public Support

Calendar year (or fiscal year beginning in)	(a) 2019	(b) 2020	(c) 2021	(d) 2022	(e) 2023	(f) Total
1 Gifts, grants, contributions, and membership fees received. (Do not include any "unusual grants.")	288,528.	177,631.	317,951.	421,526.	274,184.	1479820.
2 Tax revenues levied for the organization's benefit and either paid to or expended on its behalf						
3 The value of services or facilities furnished by a governmental unit to the organization without charge						
4 Total. Add lines 1 through 3	288,528.	177,631.	317,951.	421,526.	274,184.	1479820.
5 The portion of total contributions by each person (other than a governmental unit or publicly supported organization) included on line 1 that exceeds 2% of the amount shown on line 11, column (f)						641,378.
6 Public support. Subtract line 5 from line 4.						838,442.

Section B. Total Support

Calendar year (or fiscal year beginning in)	(a) 2019	(b) 2020	(c) 2021	(d) 2022	(e) 2023	(f) Total
7 Amounts from line 4	288,528.	177,631.	317,951.	421,526.	274,184.	1479820.
8 Gross income from interest, dividends, payments received on securities loans, rents, royalties, and income from similar sources						
9 Net income from unrelated business activities, whether or not the business is regularly carried on						
10 Other income. Do not include gain or loss from the sale of capital assets (Explain in Part VI.)	16,178.	15,831.	16,700.	15,935.	22,817.	87,461.
11 Total support. Add lines 7 through 10						1567281.
12 Gross receipts from related activities, etc. (see instructions)					12	133,474.
13 First 5 years. If the Form 990 is for the organization's first, second, third, fourth, or fifth tax year as a section 501(c)(3) organization, check this box and stop here						<input type="checkbox"/>

Section C. Computation of Public Support Percentage

14 Public support percentage for 2023 (line 6, column (f), divided by line 11, column (f))	14	53.50	%
15 Public support percentage from 2022 Schedule A, Part II, line 14	15	52.65	%
16a 33 1/3% support test - 2023. If the organization did not check the box on line 13, and line 14 is 33 1/3% or more, check this box and stop here. The organization qualifies as a publicly supported organization			<input checked="" type="checkbox"/>
b 33 1/3% support test - 2022. If the organization did not check a box on line 13 or 16a, and line 15 is 33 1/3% or more, check this box and stop here. The organization qualifies as a publicly supported organization			<input type="checkbox"/>
17a 10% -facts-and-circumstances test - 2023. If the organization did not check a box on line 13, 16a, or 16b, and line 14 is 10% or more, and if the organization meets the facts-and-circumstances test, check this box and stop here. Explain in Part VI how the organization meets the facts-and-circumstances test. The organization qualifies as a publicly supported organization			<input type="checkbox"/>
b 10% -facts-and-circumstances test - 2022. If the organization did not check a box on line 13, 16a, 16b, or 17a, and line 15 is 10% or more, and if the organization meets the facts-and-circumstances test, check this box and stop here. Explain in Part VI how the organization meets the facts-and-circumstances test. The organization qualifies as a publicly supported organization			<input type="checkbox"/>
18 Private foundation. If the organization did not check a box on line 13, 16a, 16b, 17a, or 17b, check this box and see instructions			<input type="checkbox"/>

Part III Support Schedule for Organizations Described in Section 509(a)(2)

(Complete only if you checked the box on line 10 of Part I or if the organization failed to qualify under Part II. If the organization fails to qualify under the tests listed below, please complete Part II.)

Section A. Public Support

Table with 7 columns: (a) 2019, (b) 2020, (c) 2021, (d) 2022, (e) 2023, (f) Total. Rows include: 1 Gifts, grants, contributions, and membership fees received; 2 Gross receipts from admissions, merchandise sold or services performed; 3 Gross receipts from activities that are not an unrelated trade or business; 4 Tax revenues levied for the organization's benefit; 5 The value of services or facilities furnished by a governmental unit; 6 Total. Add lines 1 through 5; 7a Amounts included on lines 1, 2, and 3 received from disqualified persons; 7b Amounts included on lines 2 and 3 received from other than disqualified persons; 8 Public support. (Subtract line 7c from line 6.)

Section B. Total Support

Table with 7 columns: (a) 2019, (b) 2020, (c) 2021, (d) 2022, (e) 2023, (f) Total. Rows include: 9 Amounts from line 6; 10a Gross income from interest, dividends, payments received on securities loans, rents, royalties, and income from similar sources; 10b Unrelated business taxable income (less section 511 taxes) from businesses acquired after June 30, 1975; 10c Add lines 10a and 10b; 11 Net income from unrelated business activities not included on line 10b, whether or not the business is regularly carried on; 12 Other income. Do not include gain or loss from the sale of capital assets (Explain in Part VI.); 13 Total support. (Add lines 9, 10c, 11, and 12.)

14 First 5 years. If the Form 990 is for the organization's first, second, third, fourth, or fifth tax year as a section 501(c)(3) organization, check this box and stop here

Section C. Computation of Public Support Percentage

Table with 2 columns: Description, Percentage. Row 15: Public support percentage for 2023 (line 8, column (f), divided by line 13, column (f)) 15 %; Row 16: Public support percentage from 2022 Schedule A, Part III, line 15 16 %

Section D. Computation of Investment Income Percentage

Table with 2 columns: Description, Percentage. Row 17: Investment income percentage for 2023 (line 10c, column (f), divided by line 13, column (f)) 17 %; Row 18: Investment income percentage from 2022 Schedule A, Part III, line 17 18 %

19a 33 1/3% support tests - 2023. If the organization did not check the box on line 14, and line 15 is more than 33 1/3%, and line 17 is not more than 33 1/3%, check this box and stop here. The organization qualifies as a publicly supported organization

b 33 1/3% support tests - 2022. If the organization did not check a box on line 14 or line 19a, and line 16 is more than 33 1/3%, and line 18 is not more than 33 1/3%, check this box and stop here. The organization qualifies as a publicly supported organization

20 Private foundation. If the organization did not check a box on line 14, 19a, or 19b, check this box and see instructions

Part IV Supporting Organizations

(Complete only if you checked a box on line 12 of Part I. If you checked box 12a, Part I, complete Sections A and B. If you checked box 12b, Part I, complete Sections A and C. If you checked box 12c, Part I, complete Sections A, D, and E. If you checked box 12d, Part I, complete Sections A and D, and complete Part V.)

Section A. All Supporting Organizations

	Yes	No
1 Are all of the organization's supported organizations listed by name in the organization's governing documents? <i>If "No," describe in Part VI how the supported organizations are designated. If designated by class or purpose, describe the designation. If historic and continuing relationship, explain.</i>		
2 Did the organization have any supported organization that does not have an IRS determination of status under section 509(a)(1) or (2)? <i>If "Yes," explain in Part VI how the organization determined that the supported organization was described in section 509(a)(1) or (2).</i>		
3a Did the organization have a supported organization described in section 501(c)(4), (5), or (6)? <i>If "Yes," answer lines 3b and 3c below.</i>		
b Did the organization confirm that each supported organization qualified under section 501(c)(4), (5), or (6) and satisfied the public support tests under section 509(a)(2)? <i>If "Yes," describe in Part VI when and how the organization made the determination.</i>		
c Did the organization ensure that all support to such organizations was used exclusively for section 170(c)(2)(B) purposes? <i>If "Yes," explain in Part VI what controls the organization put in place to ensure such use.</i>		
4a Was any supported organization not organized in the United States ("foreign supported organization")? <i>If "Yes," and if you checked box 12a or 12b in Part I, answer lines 4b and 4c below.</i>		
b Did the organization have ultimate control and discretion in deciding whether to make grants to the foreign supported organization? <i>If "Yes," describe in Part VI how the organization had such control and discretion despite being controlled or supervised by or in connection with its supported organizations.</i>		
c Did the organization support any foreign supported organization that does not have an IRS determination under sections 501(c)(3) and 509(a)(1) or (2)? <i>If "Yes," explain in Part VI what controls the organization used to ensure that all support to the foreign supported organization was used exclusively for section 170(c)(2)(B) purposes.</i>		
5a Did the organization add, substitute, or remove any supported organizations during the tax year? <i>If "Yes," answer lines 5b and 5c below (if applicable). Also, provide detail in Part VI, including (i) the names and EIN numbers of the supported organizations added, substituted, or removed; (ii) the reasons for each such action; (iii) the authority under the organization's organizing document authorizing such action; and (iv) how the action was accomplished (such as by amendment to the organizing document).</i>		
b Type I or Type II only. Was any added or substituted supported organization part of a class already designated in the organization's organizing document?		
c Substitutions only. Was the substitution the result of an event beyond the organization's control?		
6 Did the organization provide support (whether in the form of grants or the provision of services or facilities) to anyone other than (i) its supported organizations, (ii) individuals that are part of the charitable class benefited by one or more of its supported organizations, or (iii) other supporting organizations that also support or benefit one or more of the filing organization's supported organizations? <i>If "Yes," provide detail in Part VI.</i>		
7 Did the organization provide a grant, loan, compensation, or other similar payment to a substantial contributor (as defined in section 4958(c)(3)(C)), a family member of a substantial contributor, or a 35% controlled entity with regard to a substantial contributor? <i>If "Yes," complete Part I of Schedule L (Form 990).</i>		
8 Did the organization make a loan to a disqualified person (as defined in section 4958) not described on line 7? <i>If "Yes," complete Part I of Schedule L (Form 990).</i>		
9a Was the organization controlled directly or indirectly at any time during the tax year by one or more disqualified persons, as defined in section 4946 (other than foundation managers and organizations described in section 509(a)(1) or (2))? <i>If "Yes," provide detail in Part VI.</i>		
b Did one or more disqualified persons (as defined on line 9a) hold a controlling interest in any entity in which the supporting organization had an interest? <i>If "Yes," provide detail in Part VI.</i>		
c Did a disqualified person (as defined on line 9a) have an ownership interest in, or derive any personal benefit from, assets in which the supporting organization also had an interest? <i>If "Yes," provide detail in Part VI.</i>		
10a Was the organization subject to the excess business holdings rules of section 4943 because of section 4943(f) (regarding certain Type II supporting organizations, and all Type III non-functionally integrated supporting organizations)? <i>If "Yes," answer line 10b below.</i>		
b Did the organization have any excess business holdings in the tax year? <i>(Use Schedule C, Form 4720, to determine whether the organization had excess business holdings.)</i>		

Part IV Supporting Organizations (continued)

	Yes	No
11 Has the organization accepted a gift or contribution from any of the following persons?		
a A person who directly or indirectly controls, either alone or together with persons described on lines 11b and 11c below, the governing body of a supported organization?		
b A family member of a person described on line 11a above?		
c A 35% controlled entity of a person described on line 11a or 11b above? <i>If "Yes" to line 11a, 11b, or 11c, provide detail in Part VI.</i>		
11a		
11b		
11c		

Section B. Type I Supporting Organizations

	Yes	No
1 Did the governing body, members of the governing body, officers acting in their official capacity, or membership of one or more supported organizations have the power to regularly appoint or elect at least a majority of the organization's officers, directors, or trustees at all times during the tax year? <i>If "No," describe in Part VI how the supported organization(s) effectively operated, supervised, or controlled the organization's activities. If the organization had more than one supported organization, describe how the powers to appoint and/or remove officers, directors, or trustees were allocated among the supported organizations and what conditions or restrictions, if any, applied to such powers during the tax year.</i>		
2 Did the organization operate for the benefit of any supported organization other than the supported organization(s) that operated, supervised, or controlled the supporting organization? <i>If "Yes," explain in Part VI how providing such benefit carried out the purposes of the supported organization(s) that operated, supervised, or controlled the supporting organization.</i>		
1		
2		

Section C. Type II Supporting Organizations

	Yes	No
1 Were a majority of the organization's directors or trustees during the tax year also a majority of the directors or trustees of each of the organization's supported organization(s)? <i>If "No," describe in Part VI how control or management of the supporting organization was vested in the same persons that controlled or managed the supported organization(s).</i>		
1		

Section D. All Type III Supporting Organizations

	Yes	No
1 Did the organization provide to each of its supported organizations, by the last day of the fifth month of the organization's tax year, (i) a written notice describing the type and amount of support provided during the prior tax year, (ii) a copy of the Form 990 that was most recently filed as of the date of notification, and (iii) copies of the organization's governing documents in effect on the date of notification, to the extent not previously provided?		
2 Were any of the organization's officers, directors, or trustees either (i) appointed or elected by the supported organization(s) or (ii) serving on the governing body of a supported organization? <i>If "No," explain in Part VI how the organization maintained a close and continuous working relationship with the supported organization(s).</i>		
3 By reason of the relationship described on line 2, above, did the organization's supported organizations have a significant voice in the organization's investment policies and in directing the use of the organization's income or assets at all times during the tax year? <i>If "Yes," describe in Part VI the role the organization's supported organizations played in this regard.</i>		
1		
2		
3		

Section E. Type III Functionally Integrated Supporting Organizations

1 Check the box next to the method that the organization used to satisfy the Integral Part Test during the year (see instructions).			
a <input type="checkbox"/> The organization satisfied the Activities Test. Complete line 2 below.			
b <input type="checkbox"/> The organization is the parent of each of its supported organizations. Complete line 3 below.			
c <input type="checkbox"/> The organization supported a governmental entity. Describe in Part VI how you supported a governmental entity (see instructions).			
2 Activities Test. Answer lines 2a and 2b below.			
a Did substantially all of the organization's activities during the tax year directly further the exempt purposes of the supported organization(s) to which the organization was responsive? <i>If "Yes," then in Part VI identify those supported organizations and explain how these activities directly furthered their exempt purposes, how the organization was responsive to those supported organizations, and how the organization determined that these activities constituted substantially all of its activities.</i>			
b Did the activities described on line 2a, above, constitute activities that, but for the organization's involvement, one or more of the organization's supported organization(s) would have been engaged in? <i>If "Yes," explain in Part VI the reasons for the organization's position that its supported organization(s) would have engaged in these activities but for the organization's involvement.</i>			
3 Parent of Supported Organizations. Answer lines 3a and 3b below.			
a Did the organization have the power to regularly appoint or elect a majority of the officers, directors, or trustees of each of the supported organizations? <i>If "Yes" or "No" provide details in Part VI.</i>			
b Did the organization exercise a substantial degree of direction over the policies, programs, and activities of each of its supported organizations? <i>If "Yes," describe in Part VI the role played by the organization in this regard.</i>			
2a			
2b			
3a			
3b			

Part V Type III Non-Functionally Integrated 509(a)(3) Supporting Organizations

1 Check here if the organization satisfied the Integral Part Test as a qualifying trust on Nov. 20, 1970 (explain in Part VI). See instructions.
 All other Type III non-functionally integrated supporting organizations must complete Sections A through E.

Section A - Adjusted Net Income		(A) Prior Year	(B) Current Year (optional)
1	Net short-term capital gain	1	
2	Recoveries of prior-year distributions	2	
3	Other gross income (see instructions)	3	
4	Add lines 1 through 3.	4	
5	Depreciation and depletion	5	
6	Portion of operating expenses paid or incurred for production or collection of gross income or for management, conservation, or maintenance of property held for production of income (see instructions)	6	
7	Other expenses (see instructions)	7	
8	Adjusted Net Income (subtract lines 5, 6, and 7 from line 4)	8	

Section B - Minimum Asset Amount		(A) Prior Year	(B) Current Year (optional)
1	Aggregate fair market value of all non-exempt-use assets (see instructions for short tax year or assets held for part of year):		
a	Average monthly value of securities	1a	
b	Average monthly cash balances	1b	
c	Fair market value of other non-exempt-use assets	1c	
d	Total (add lines 1a, 1b, and 1c)	1d	
e	Discount claimed for blockage or other factors (explain in detail in Part VI):		
2	Acquisition indebtedness applicable to non-exempt-use assets	2	
3	Subtract line 2 from line 1d.	3	
4	Cash deemed held for exempt use. Enter 0.015 of line 3 (for greater amount, see instructions).	4	
5	Net value of non-exempt-use assets (subtract line 4 from line 3)	5	
6	Multiply line 5 by 0.035.	6	
7	Recoveries of prior-year distributions	7	
8	Minimum Asset Amount (add line 7 to line 6)	8	

Section C - Distributable Amount			Current Year
1	Adjusted net income for prior year (from Section A, line 8, column A)	1	
2	Enter 0.85 of line 1.	2	
3	Minimum asset amount for prior year (from Section B, line 8, column A)	3	
4	Enter greater of line 2 or line 3.	4	
5	Income tax imposed in prior year	5	
6	Distributable Amount. Subtract line 5 from line 4, unless subject to emergency temporary reduction (see instructions).	6	
7	<input type="checkbox"/> Check here if the current year is the organization's first as a non-functionally integrated Type III supporting organization (see instructions).		

Part V Type III Non-Functionally Integrated 509(a)(3) Supporting Organizations (continued)

Section D - Distributions		Current Year
1	Amounts paid to supported organizations to accomplish exempt purposes	1
2	Amounts paid to perform activity that directly furthers exempt purposes of supported organizations, in excess of income from activity	2
3	Administrative expenses paid to accomplish exempt purposes of supported organizations	3
4	Amounts paid to acquire exempt-use assets	4
5	Qualified set-aside amounts (prior IRS approval required - provide details in Part VI)	5
6	Other distributions (describe in Part VI). See instructions.	6
7	Total annual distributions. Add lines 1 through 6.	7
8	Distributions to attentive supported organizations to which the organization is responsive (provide details in Part VI). See instructions.	8
9	Distributable amount for 2023 from Section C, line 6	9
10	Line 8 amount divided by line 9 amount	10

Section E - Distribution Allocations (see instructions)	(i) Excess Distributions	(ii) Underdistributions Pre-2023	(iii) Distributable Amount for 2023
1	Distributable amount for 2023 from Section C, line 6		
2	Underdistributions, if any, for years prior to 2023 (reasonable cause required - explain in Part VI). See instructions.		
3	Excess distributions carryover, if any, to 2023		
a	From 2018		
b	From 2019		
c	From 2020		
d	From 2021		
e	From 2022		
f	Total of lines 3a through 3e		
g	Applied to underdistributions of prior years		
h	Applied to 2023 distributable amount		
i	Carryover from 2018 not applied (see instructions)		
j	Remainder. Subtract lines 3g, 3h, and 3i from line 3f.		
4	Distributions for 2023 from Section D, line 7: \$		
a	Applied to underdistributions of prior years		
b	Applied to 2023 distributable amount		
c	Remainder. Subtract lines 4a and 4b from line 4.		
5	Remaining underdistributions for years prior to 2023, if any. Subtract lines 3g and 4a from line 2. For result greater than zero, explain in Part VI. See instructions.		
6	Remaining underdistributions for 2023. Subtract lines 3h and 4b from line 1. For result greater than zero, explain in Part VI. See instructions.		
7	Excess distributions carryover to 2024. Add lines 3j and 4c.		
8	Breakdown of line 7:		
a	Excess from 2019		
b	Excess from 2020		
c	Excess from 2021		
d	Excess from 2022		
e	Excess from 2023		

Part VI **Supplemental Information.** Provide the explanations required by Part II, line 10; Part II, line 17a or 17b; Part III, line 12; Part IV, Section A, lines 1, 2, 3b, 3c, 4b, 4c, 5a, 6, 9a, 9b, 9c, 11a, 11b, and 11c; Part IV, Section B, lines 1 and 2; Part IV, Section C, line 1; Part IV, Section D, lines 2 and 3; Part IV, Section E, lines 1c, 2a, 2b, 3a, and 3b; Part V, line 1; Part V, Section B, line 1e; Part V, Section D, lines 5, 6, and 8; and Part V, Section E, lines 2, 5, and 6. Also complete this part for any additional information. (See instructions.)

COPY

Schedule B
(Form 990)

Department of the Treasury
Internal Revenue Service

Schedule of Contributors

Attach to Form 990, 990-EZ, or 990-PF.
Go to www.irs.gov/Form990 for the latest information.

OMB No. 1545-0047

2023

Name of the organization

AZUKA THEATRE COLLECTIVE

Employer identification number

23-3005982

Organization type (check one):

Filers of:

Section:

Form 990 or 990-EZ

501(c)(3) (enter number) organization

4947(a)(1) nonexempt charitable trust **not** treated as a private foundation

527 political organization

Form 990-PF

501(c)(3) exempt private foundation

4947(a)(1) nonexempt charitable trust treated as a private foundation

501(c)(3) taxable private foundation

Check if your organization is covered by the **General Rule** or a **Special Rule**.

Note: Only a section 501(c)(7), (8), or (10) organization can check boxes for both the General Rule and a Special Rule. See instructions.

General Rule

For an organization filing Form 990, 990-EZ, or 990-PF that received, during the year, contributions totaling \$5,000 or more (in money or property) from any one contributor. Complete Parts I and II. See instructions for determining a contributor's total contributions.

Special Rules

For an organization described in section 501(c)(3) filing Form 990 or 990-EZ that met the 33 1/3% support test of the regulations under sections 509(a)(1) and 170(b)(1)(A)(vi), that checked Schedule A (Form 990), Part II, line 13, 16a, or 16b, and that received from any one contributor, during the year, total contributions of the greater of **(1)** \$5,000; or **(2)** 2% of the amount on (i) Form 990, Part VIII, line 1h; or (ii) Form 990-EZ, line 1. Complete Parts I and II.

For an organization described in section 501(c)(7), (8), or (10) filing Form 990 or 990-EZ that received from any one contributor, during the year, total contributions of more than \$1,000 *exclusively* for religious, charitable, scientific, literary, or educational purposes, or for the prevention of cruelty to children or animals. Complete Parts I (entering "N/A" in column (b) instead of the contributor name and address), II, and III.

For an organization described in section 501(c)(7), (8), or (10) filing Form 990 or 990-EZ that received from any one contributor, during the year, contributions *exclusively* for religious, charitable, etc., purposes, but no such contributions totaled more than \$1,000. If this box is checked, enter here the total contributions that were received during the year for an *exclusively* religious, charitable, etc., purpose. Don't complete any of the parts unless the **General Rule** applies to this organization because it received *nonexclusively* religious, charitable, etc., contributions totaling \$5,000 or more during the year \$ _____

Caution: An organization that isn't covered by the General Rule and/or the Special Rules doesn't file Schedule B (Form 990), but it **must** answer "No" on Part IV, line 2, of its Form 990; or check the box on line H of its Form 990-EZ or on its Form 990-PF, Part I, line 2, to certify that it doesn't meet the filing requirements of Schedule B (Form 990).

For Paperwork Reduction Act Notice, see the instructions for Form 990, 990-EZ, or 990-PF.

Schedule B (Form 990) (2023)

Name of organization AZUKA THEATRE COLLECTIVE	Employer identification number 23-3005982
---	---

Part I Contributors (see instructions). Use duplicate copies of Part I if additional space is needed.

(a) No.	(b) Name, address, and ZIP + 4	(c) Total contributions	(d) Type of contribution
1	WILLIAM PENN FOUNDATION TWO LOGAN SQUARE PHILADELPHIA, PA 19102	\$ 78,000.	Person <input checked="" type="checkbox"/> Payroll <input type="checkbox"/> Noncash <input type="checkbox"/> (Complete Part II for noncash contributions.)
2	WYNCOTE FOUNDATION 1717 ARCH STREET PHILADELPHIA, PA 19108	\$ 30,000.	Person <input checked="" type="checkbox"/> Payroll <input type="checkbox"/> Noncash <input type="checkbox"/> (Complete Part II for noncash contributions.)
3	SCHUBERT FOUNDATION 234 W 44TH STREET NEW YORK, NY 10036	\$ 20,000.	Person <input checked="" type="checkbox"/> Payroll <input type="checkbox"/> Noncash <input type="checkbox"/> (Complete Part II for noncash contributions.)
4	JOANNE HARMELIN 525 RIGHTERS FERRY ROAD BALA CYNWYD, PA 19004	\$ 10,000.	Person <input checked="" type="checkbox"/> Payroll <input type="checkbox"/> Noncash <input type="checkbox"/> (Complete Part II for noncash contributions.)
5	PECO 2301 MARKET STREET PHILADELPHIA, PA 19103	\$ 9,000.	Person <input checked="" type="checkbox"/> Payroll <input type="checkbox"/> Noncash <input type="checkbox"/> (Complete Part II for noncash contributions.)
6	PHILADELPHIA CULTURAL FUND 30 SOUTH 15TH STREET PHILADELPHIA, PA 19102	\$ 20,369.	Person <input checked="" type="checkbox"/> Payroll <input type="checkbox"/> Noncash <input type="checkbox"/> (Complete Part II for noncash contributions.)

Name of organization AZUKA THEATRE COLLECTIVE	Employer identification number 23-3005982
---	---

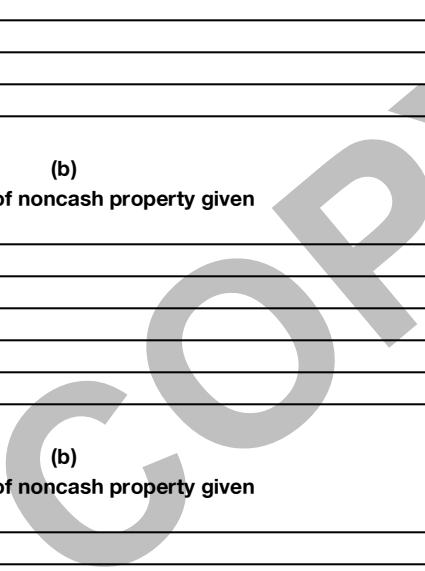
Part I Contributors (see instructions). Use duplicate copies of Part I if additional space is needed.

(a) No.	(b) Name, address, and ZIP + 4	(c) Total contributions	(d) Type of contribution
7	COMMONWEALTH OF PA 625 FORSTER STREET HARRISBURG, PA 17102	\$ 13,000.	Person <input checked="" type="checkbox"/> Payroll <input type="checkbox"/> Noncash <input type="checkbox"/> (Complete Part II for noncash contributions.)
8	SIMPATICO THEATRE 850 S. 2ND STREET PHILADELPHIA, PA 19148	\$ 25,000.	Person <input checked="" type="checkbox"/> Payroll <input type="checkbox"/> Noncash <input type="checkbox"/> (Complete Part II for noncash contributions.)
9	THE PHILADELPHIA FOUNDATION 1835 MARKET STREET PHILADELPHIA, PA 19103	\$ 20,800.	Person <input checked="" type="checkbox"/> Payroll <input type="checkbox"/> Noncash <input type="checkbox"/> (Complete Part II for noncash contributions.)
_____	_____ _____ _____	\$ _____	Person <input type="checkbox"/> Payroll <input type="checkbox"/> Noncash <input type="checkbox"/> (Complete Part II for noncash contributions.)
_____	_____ _____ _____	\$ _____	Person <input type="checkbox"/> Payroll <input type="checkbox"/> Noncash <input type="checkbox"/> (Complete Part II for noncash contributions.)
_____	_____ _____ _____	\$ _____	Person <input type="checkbox"/> Payroll <input type="checkbox"/> Noncash <input type="checkbox"/> (Complete Part II for noncash contributions.)

Name of organization AZUKA THEATRE COLLECTIVE	Employer identification number 23-3005982
---	---

Part II Noncash Property (see instructions). Use duplicate copies of Part II if additional space is needed.

(a) No. from Part I	(b) Description of noncash property given	(c) FMV (or estimate) (See instructions.)	(d) Date received
		\$ _____	_____
		\$ _____	_____
		\$ _____	_____
		\$ _____	_____
		\$ _____	_____
		\$ _____	_____
		\$ _____	_____



Name of organization AZUKA THEATRE COLLECTIVE	Employer identification number 23-3005982
---	---

Part III Exclusively religious, charitable, etc., contributions to organizations described in section 501(c)(7), (8), or (10) that total more than \$1,000 for the year from any one contributor. Complete columns (a) through (e) and the following line entry. For organizations completing Part III, enter the total of exclusively religious, charitable, etc., contributions of **\$1,000 or less** for the year. (Enter this info. once.) \$ _____
Use duplicate copies of Part III if additional space is needed.

(a) No. from Part I	(b) Purpose of gift	(c) Use of gift	(d) Description of how gift is held
	<hr/> <hr/> <hr/>	<hr/> <hr/> <hr/>	<hr/> <hr/> <hr/>
(e) Transfer of gift			
Transferee's name, address, and ZIP + 4		Relationship of transferor to transferee	
<hr/> <hr/> <hr/>		<hr/> <hr/> <hr/>	
(a) No. from Part I	(b) Purpose of gift	(c) Use of gift	(d) Description of how gift is held
	<hr/> <hr/> <hr/>	<hr/> <hr/> <hr/>	<hr/> <hr/> <hr/>
(e) Transfer of gift			
Transferee's name, address, and ZIP + 4		Relationship of transferor to transferee	
<hr/> <hr/> <hr/>		<hr/> <hr/> <hr/>	
(a) No. from Part I	(b) Purpose of gift	(c) Use of gift	(d) Description of how gift is held
	<hr/> <hr/> <hr/>	<hr/> <hr/> <hr/>	<hr/> <hr/> <hr/>
(e) Transfer of gift			
Transferee's name, address, and ZIP + 4		Relationship of transferor to transferee	
<hr/> <hr/> <hr/>		<hr/> <hr/> <hr/>	
(a) No. from Part I	(b) Purpose of gift	(c) Use of gift	(d) Description of how gift is held
	<hr/> <hr/> <hr/>	<hr/> <hr/> <hr/>	<hr/> <hr/> <hr/>
(e) Transfer of gift			
Transferee's name, address, and ZIP + 4		Relationship of transferor to transferee	
<hr/> <hr/> <hr/>		<hr/> <hr/> <hr/>	

SCHEDULE D (Form 990)

Department of the Treasury Internal Revenue Service

Supplemental Financial Statements

Complete if the organization answered "Yes" on Form 990, Part IV, line 6, 7, 8, 9, 10, 11a, 11b, 11c, 11d, 11e, 11f, 12a, or 12b. Attach to Form 990.

Go to www.irs.gov/Form990 for instructions and the latest information.

OMB No. 1545-0047

2023

Open to Public Inspection

Name of the organization AZUKA THEATRE COLLECTIVE Employer identification number 23-3005982

Part I Organizations Maintaining Donor Advised Funds or Other Similar Funds or Accounts. Complete if the organization answered "Yes" on Form 990, Part IV, line 6.

Table with 3 columns: Question, (a) Donor advised funds, (b) Funds and other accounts. Rows include total number at end of year, aggregate value of contributions, grants, and end of year, and two yes/no questions about donor property and grant fund usage.

Part II Conservation Easements. Complete if the organization answered "Yes" on Form 990, Part IV, line 7.

Table with 3 columns: Question, (a) Donor advised funds, (b) Funds and other accounts. Rows include purpose of easements, total number and acreage, number of easements on historic structures, and monitoring expenses.

Part III Organizations Maintaining Collections of Art, Historical Treasures, or Other Similar Assets. Complete if the organization answered "Yes" on Form 990, Part IV, line 8.

Table with 3 columns: Question, (a) Donor advised funds, (b) Funds and other accounts. Rows include reporting requirements for art and historical treasures.

Part III Organizations Maintaining Collections of Art, Historical Treasures, or Other Similar Assets (continued)

- 3 Using the organization's acquisition, accession, and other records, check any of the following that make significant use of its collection items (check all that apply).
- a Public exhibition
 - b Scholarly research
 - c Preservation for future generations
 - d Loan or exchange program
 - e Other _____
- 4 Provide a description of the organization's collections and explain how they further the organization's exempt purpose in Part XIII.
- 5 During the year, did the organization solicit or receive donations of art, historical treasures, or other similar assets to be sold to raise funds rather than to be maintained as part of the organization's collection? Yes No

Part IV Escrow and Custodial Arrangements Complete if the organization answered "Yes" on Form 990, Part IV, line 9, or reported an amount on Form 990, Part X, line 21.

- 1a Is the organization an agent, trustee, custodian, or other intermediary for contributions or other assets not included on Form 990, Part X? Yes No
- b If "Yes," explain the arrangement in Part XIII and complete the following table:
- | | Amount |
|---------------------------------|--------|
| c Beginning balance | 1c |
| d Additions during the year | 1d |
| e Distributions during the year | 1e |
| f Ending balance | 1f |
- 2a Did the organization include an amount on Form 990, Part X, line 21, for escrow or custodial account liability? Yes No
- b If "Yes," explain the arrangement in Part XIII. Check here if the explanation has been provided in Part XIII

Part V Endowment Funds Complete if the organization answered "Yes" on Form 990, Part IV, line 10.

	(a) Current year	(b) Prior year	(c) Two years back	(d) Three years back	(e) Four years back
1a Beginning of year balance					
b Contributions					
c Net investment earnings, gains, and losses					
d Grants or scholarships					
e Other expenditures for facilities and programs					
f Administrative expenses					
g End of year balance					

- 2 Provide the estimated percentage of the current year end balance (line 1g, column (a)) held as:
- a Board designated or quasi-endowment _____ %
 - b Permanent endowment _____ %
 - c Term endowment _____ %
- The percentages on lines 2a, 2b, and 2c should equal 100%.
- 3a Are there endowment funds not in the possession of the organization that are held and administered for the organization by:
- | | Yes | No |
|--|--------|----|
| (i) Unrelated organizations? | 3a(i) | |
| (ii) Related organizations? | 3a(ii) | |
| b If "Yes" on line 3a(ii), are the related organizations listed as required on Schedule R? | 3b | |
- 4 Describe in Part XIII the intended uses of the organization's endowment funds.

Part VI Land, Buildings, and Equipment Complete if the organization answered "Yes" on Form 990, Part IV, line 11a. See Form 990, Part X, line 10.

Description of property	(a) Cost or other basis (investment)	(b) Cost or other basis (other)	(c) Accumulated depreciation	(d) Book value
1a Land				
b Buildings				
c Leasehold improvements				
d Equipment		23,299.	22,579.	720.
e Other				
Total. Add lines 1a through 1e. (Column (d) must equal Form 990, Part X, line 10c, column (B))				720.

Part VII Investments - Other Securities

Complete if the organization answered "Yes" on Form 990, Part IV, line 11b. See Form 990, Part X, line 12.

(a) Description of security or category (including name of security)	(b) Book value	(c) Method of valuation: Cost or end-of-year market value
(1) Financial derivatives		
(2) Closely held equity interests		
(3) Other		
(A)		
(B)		
(C)		
(D)		
(E)		
(F)		
(G)		
(H)		
Total. (Col. (b) must equal Form 990, Part X, line 12, col. (B))		

Part VIII Investments - Program Related.

Complete if the organization answered "Yes" on Form 990, Part IV, line 11c. See Form 990, Part X, line 13.

(a) Description of investment	(b) Book value	(c) Method of valuation: Cost or end-of-year market value
(1)		
(2)		
(3)		
(4)		
(5)		
(6)		
(7)		
(8)		
(9)		
Total. (Col. (b) must equal Form 990, Part X, line 13, col. (B))		

Part IX Other Assets

Complete if the organization answered "Yes" on Form 990, Part IV, line 11d. See Form 990, Part X, line 15.

(a) Description	(b) Book value
(1) RENTAL DEPOSIT	1,000.
(2)	
(3)	
(4)	
(5)	
(6)	
(7)	
(8)	
(9)	
Total. (Column (b) must equal Form 990, Part X, line 15, col. (B))	1,000.

Part X Other Liabilities

Complete if the organization answered "Yes" on Form 990, Part IV, line 11e or 11f. See Form 990, Part X, line 25.

1. (a) Description of liability	(b) Book value
(1) Federal income taxes	
(2)	
(3)	
(4)	
(5)	
(6)	
(7)	
(8)	
(9)	
Total. (Column (b) must equal Form 990, Part X, line 25, col. (B))	

2. Liability for uncertain tax positions. In Part XIII, provide the text of the footnote to the organization's financial statements that reports the organization's liability for uncertain tax positions under FASB ASC 740. Check here if the text of the footnote has been provided in Part XIII ...

Part XI Reconciliation of Revenue per Audited Financial Statements With Revenue per Return

Complete if the organization answered "Yes" on Form 990, Part IV, line 12a.

1	Total revenue, gains, and other support per audited financial statements	1	329,648.
2	Amounts included on line 1 but not on Form 990, Part VIII, line 12:		
a	Net unrealized gains (losses) on investments	2a	
b	Donated services and use of facilities	2b	1,200.
c	Recoveries of prior year grants	2c	
d	Other (Describe in Part XIII.)	2d	
e	Add lines 2a through 2d	2e	1,200.
3	Subtract line 2e from line 1	3	328,448.
4	Amounts included on Form 990, Part VIII, line 12, but not on line 1:		
a	Investment expenses not included on Form 990, Part VIII, line 7b	4a	
b	Other (Describe in Part XIII.)	4b	
c	Add lines 4a and 4b	4c	0.
5	Total revenue. Add lines 3 and 4c . (This must equal Form 990, Part I, line 12.)	5	328,448.

Part XII Reconciliation of Expenses per Audited Financial Statements With Expenses per Return

Complete if the organization answered "Yes" on Form 990, Part IV, line 12a.

1	Total expenses and losses per audited financial statements	1	352,082.
2	Amounts included on line 1 but not on Form 990, Part IX, line 25:		
a	Donated services and use of facilities	2a	1,200.
b	Prior year adjustments	2b	
c	Other losses	2c	
d	Other (Describe in Part XIII.)	2d	
e	Add lines 2a through 2d	2e	1,200.
3	Subtract line 2e from line 1	3	350,882.
4	Amounts included on Form 990, Part IX, line 25, but not on line 1:		
a	Investment expenses not included on Form 990, Part VIII, line 7b	4a	
b	Other (Describe in Part XIII.)	4b	
c	Add lines 4a and 4b	4c	0.
5	Total expenses. Add lines 3 and 4c . (This must equal Form 990, Part I, line 18.)	5	350,882.

Part XIII Supplemental Information

Provide the descriptions required for Part II, lines 3, 5, and 9; Part III, lines 1a and 4; Part IV, lines 1b and 2b; Part V, line 4; Part X, line 2; Part XI, lines 2d and 4b; and Part XII, lines 2d and 4b. Also complete this part to provide any additional information.

PART XII, LINE 2D - OTHER ADJUSTMENTS:

ROUNDING

**SCHEDULE O
(Form 990)**

Department of the Treasury
Internal Revenue Service

Supplemental Information to Form 990 or 990-EZ

Complete to provide information for responses to specific questions on
Form 990 or 990-EZ or to provide any additional information.
Attach to Form 990 or Form 990-EZ.
Go to www.irs.gov/Form990 for the latest information.

OMB No. 1545-0047

2023

Open to Public
Inspection

Name of the organization

AZUKA THEATRE COLLECTIVE

Employer identification number

23-3005982

FORM 990, PART VI, SECTION A, LINE 8B:

THERE IS NO COMMITTEE TO ACT ON BEHALF OF THE BOARD.

FORM 990, PART VI, SECTION B, LINE 11B:

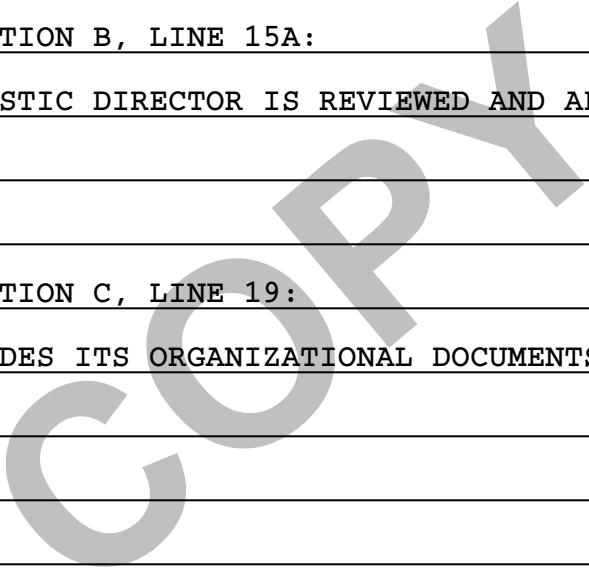
THE BOARD MEETS TO REVIEW THE 990 AND VOTES TO APPROVE THE 990 BEFORE IT IS
FILED.

FORM 990, PART VI, SECTION B, LINE 15A:

THE SALARY OF THE ARTISTIC DIRECTOR IS REVIEWED AND APPROVED BY THE BOARD
OF DIRECTORS.

FORM 990, PART VI, SECTION C, LINE 19:

THE ORGANIZATION PROVIDES ITS ORGANIZATIONAL DOCUMENTS AND FORM 990 UPON
REQUEST.



AZUKA THEATRE COLLECTIVE
FINANCIAL STATEMENTS
JUNE 30, 2024 AND 2023

COPY

AZUKA THEATRE COLLECTIVE

CONTENTS

	<u>PAGE</u>
<u>INDEPENDENT AUDITORS' REPORT</u>	<u>1-2</u>
STATEMENTS OF ASSETS, LIABILITIES AND NET ASSETS - MODIFIED CASH BASIS	3
STATEMENTS OF SUPPORT AND REVENUE, EXPENSES AND NET ASSETS - MODIFIED CASH BASIS	4-5
STATEMENTS OF FUNCTIONAL EXPENSES- MODIFIED CASH BASIS	6-7
STATEMENTS OF CASH FLOW- MODIFIED CASH BASIS	8
NOTES TO FINANCIAL STATEMENTS	9-12

145 West Lancaster Avenue

Paoli, Pennsylvania 19301

Telephone 610 296 2500

Facsimile 610 296 7922

Independent Auditors' Report

January 22, 2025

To the Board of Directors
Azuka Theatre Collective
Philadelphia, Pennsylvania

Opinion

We have audited the accompanying financial statements of Azuka Theatre Collective (a non-profit organization) which comprise the statements of assets, liabilities, and net assets- modified cash basis as of June 30, 2024 and 2023 and the related statements of support and revenue, expenses and net assets- modified cash basis, functional expenses- modified cash basis and cash flows- modified cash basis for the years then ended, and the related notes to the financial statements.

In our opinion, the financial statements referred to above present fairly, in all material respects, the assets, liabilities, and net assets of Azuka Theatre Collective as of June 30, 2023 and 2022, and its revenues, expenses, and other changes in net assets for the years then ended in accordance with the basis of accounting Azuka Theatre Collective uses for the modified cash basis purposes described in note 1.

Basis for Opinion

We conducted our audits in accordance with auditing standards generally accepted in the United States of America. Our responsibilities under those standards are further described in the Auditor's Responsibilities for the Audit of the Financial Statements section of our report. We are required to be independent of Azuka Theatre Collective and to meet our ethical responsibilities in accordance with the relevant ethical requirements relating to our audit. We believe that the audit evidence we have obtained is sufficient and appropriate to provide a basis for our opinion.

Basis of Accounting

We draw attention to Note 1 of the financial statements which describes the basis of accounting. The financial statements are prepared on the modified cash basis of accounting, which is a basis of accounting other than accounting principles generally accepted in the United States of America. Our opinion is not modified with respect to this matter.

Responsibilities of Management for the Financial Statements

Management is responsible for the preparation and fair presentation of these financial statements in accordance with the modified cash basis of accounting as described in note 1; this includes determining that the modified cash basis is an acceptable basis for the preparation of the financial statements in the circumstances. Management is also responsible for the design, implementation, and maintenance of internal control relevant to the preparation of financial statements that are free from material misstatement, whether due to fraud or error.

Auditor's Responsibilities for the Audit of the Financial Statements

Our objectives are to obtain reasonable assurance about whether the financial statements as a whole are free from material misstatement, whether due to fraud or error, and to issue an auditor's report that includes our opinion. Reasonable assurance is a high level of assurance but is not absolute assurance and therefore is not a guarantee that an audit conducted in accordance with generally accepted auditing standards will always detect a material misstatement when it exists. The risk of not detecting a material misstatement resulting from fraud is higher than for one resulting from error, as fraud involve collusion, forgery, intentional omissions, misrepresentations, or the override of internal control. Misstatements are considered material if there is a substantial likelihood that, individually or in the aggregate, they would influence the judgement made by a reasonable user based on the financial statements.

In performing an audit in accordance with generally accepted auditing standards we:

Exercise professional judgement and maintain professional skepticism throughout the audit

Identify and assess the risks of material misstatement of the financial statements, whether due to fraud or error, and design and perform audit procedures responsive to those risks. Such procedures include examining, on a test basis, evidence regarding the amounts and disclosures in the financial statements.

Obtain an understanding of internal control relevant to the audit in order to design audit procedures that are appropriate in the circumstances, but not for the purpose of expressing an opinion on the effectiveness of Azuka Theatre Collective's internal control. Accordingly, no such opinion is expressed.

Evaluate the appropriateness of accounting policies used and the reasonableness of significant accounting estimates made by management, as well as evaluate the overall presentation of the financial statements.

Conclude whether, in our judgement, there are condition or events, considered in the aggregate, that raise substantial doubt about Azuka Theatre Collective's ability to continue as a going concern for a reasonable period of time.

We are required to communicate with those charged with governance regarding, among other matters, the planned scope and timing of the audit, significant audit findings, and certain internal control matters that we identified during the audit,

Robert J. Kratz & Company

Robert J. Kratz & Company
Certified Public Accountants
Paoli, PA

AZUKA THEATRE COLLECTIVE
STATEMENTS OF ASSETS, LIABILITIES AND NET ASSETS - MODIFIED CASH BASIS
JUNE 30, 2024 AND 2023

	<u>2024</u>	<u>2023</u>
<u>ASSETS</u>		
Current assets		
Cash	\$ 254	\$ 4,207
Cash restricted, education	16,374	26,900
Total current assets	<u>16,628</u>	<u>31,107</u>
Property and equipment	23,299	23,299
Less accumulated depreciation	22,579	22,099
Net property and equipment	<u>720</u>	<u>1,200</u>
Other assets		
Rental deposit	1,000	1,000
Total other assets	<u>1,000</u>	<u>1,000</u>
Total assets	<u>\$ 18,348</u>	<u>\$ 33,307</u>
<u>LIABILITIES AND NET ASSETS</u>		
Current liabilities		
Credit card payable	\$ 7,475	\$ -
Total current liabilities	<u>7,475</u>	<u>-</u>
Net assets		
Without donor restrictions	(5,501)	6,407
With donor restrictions	16,374	26,900
Total net assets	<u>10,873</u>	<u>33,307</u>
Total liabilities and net assets	<u>\$ 18,348</u>	<u>\$ 33,307</u>

The accompanying notes are an integral part of these financial statements.

AZUKA THEATRE COLLECTIVE
STATEMENT OF SUPPORT AND REVENUE, EXPENSES AND
NET ASSETS - MODIFIED CASH BASIS
FOR THE YEAR ENDED JUNE 30, 2024

	<u>Total</u>	<u>Without Donor Restrictions</u>	<u>With Donor Restrictions</u>
Support and revenue			
Contributions	\$ 274,184	\$ 221,184	\$ 53,000
Ticket sales	31,444	31,444	-
Rental income	17,155	17,155	-
Contribution of nonfinancial assets	1,200	1,200	-
Miscellaneous income	5,665	5,665	-
Net assets released from restrictions	-	63,526	(63,526)
	<u>329,648</u>	<u>340,174</u>	<u>(10,526)</u>
Total support and revenue			
Expenses			
Program services expense	246,123	246,123	-
Supporting services expense			
Management and general	79,742	79,742	-
Fundraising	26,217	26,217	-
	<u>352,082</u>	<u>352,082</u>	<u>-</u>
Total expenses			
Change in net assets	(22,434)	(11,908)	(10,526)
Net assets - beginning of year	<u>33,307</u>	<u>6,407</u>	<u>26,900</u>
Net assets, end of year	<u>\$ 10,873</u>	<u>\$ (5,501)</u>	<u>\$ 16,374</u>

The accompanying notes are an integral part of these financial statements.

AZUKA THEATRE COLLECTIVE
STATEMENT OF SUPPORT AND REVENUE, EXPENSES AND
NET ASSETS - MODIFIED CASH BASIS
FOR THE YEAR ENDED JUNE 30, 2023

	<u>Total</u>	<u>Without Donor Restrictions</u>	<u>With Donor Restrictions</u>
Support and revenue			
Contributions	\$ 421,526	\$ 377,526	\$ 44,000
Ticket sales	32,825	32,825	-
Rental income	14,925	14,925	-
Contribution of nonfinancial assets	2,895	2,895	
Miscellaneous income	1,010	1,010	
Net assets released from restrictions	-	17,100	(17,100)
	<u>473,181</u>	<u>446,281</u>	<u>26,900</u>
Expenses			
Program services expense	347,037	347,037	-
Supporting services expense			
Management and general	105,047	105,047	-
Fundraising	40,417	40,417	-
	<u>492,501</u>	<u>492,501</u>	<u>-</u>
Change in net assets	(19,320)	(46,220)	26,900
Net assets unrestricted, beginning of year	<u>52,627</u>	<u>52,627</u>	<u>-</u>
Net assets unrestricted, end of year	<u>\$ 33,307</u>	<u>\$ 6,407</u>	<u>\$ 26,900</u>

The accompanying notes are an integral part of these financial statements.

AZUKA THEATRE COLLECTIVE
STATEMENT OF FUNCTIONAL EXPENSES - MODIFIED CASH BASIS
FOR THE YEAR ENDED JUNE 30, 2024

	<u>Program Services</u>	<u>Management and General</u>	<u>Fundraising</u>	<u>Total</u>
Actors	\$ 12,745			\$ 12,745
Actor benefits	826			826
Artistic associate salary	23,650	13,200	7,150	44,000
Executive director salary	938	3,750	4,687	9,375
Bank service charges		20		20
Box office	2,292			2,292
Communications	886	885	885	2,656
Community engagement director	6,326			6,326
Depreciation expense	-	480		480
Development expense			685	685
Directors fee	7,650			7,650
Director of marketing salary	10,200	13,600	10,200	34,000
Dues and subscriptions	2,814			2,814
General operating expense	3,392	4,259		7,651
House manager	2,340			2,340
Insurance	11,162	631		11,793
Meals and entertainment		128		128
Marketing	14,735			14,735
Office supplies and expense		252		252
Payroll taxes	4,489	3,025	2,244	9,758
Postage and delivery		205		205
Production costs	115,270			115,270
Professional fees	9,732	9,193	366	19,291
Rent		30,114		30,114
Teaching artist	16,676	-		16,676
	<u>\$ 246,123</u>	<u>\$ 79,742</u>	<u>\$ 26,217</u>	<u>\$ 352,082</u>

The accompanying notes are an integral part of these financial statements.

AZUKA THEATRE COLLECTIVE
STATEMENT OF FUNCTIONAL EXPENSES - MODIFIED CASH BASIS
FOR THE YEAR ENDED JUNE 30, 2023

	<u>Program Services</u>	<u>Management and General</u>	<u>Fundraising</u>	<u>Total</u>
Actors	\$ 18,202	\$ -	\$ -	\$ 18,202
Artistic associate salary	32,911	16,413	5,386	54,710
Executive director salary	-	20,150	20,150	40,300
Box office	2,708	-	-	2,708
Communications	614	614	615	1,843
Depreciation expense	-	800	-	800
Development expense	-	-	3,274	3,274
Directors fee	8,000	-	-	8,000
Director of marketing salary	19,500	11,700	7,800	39,000
Dues and subscriptions	2,546	-	-	2,546
General operating expense	-	3,491	-	3,491
Insurance	7,226	620	-	7,846
Marketing	47,901	-	-	47,901
Meals and entertainment	-	32	-	32
Office supplies and expense	-	1,409	-	1,409
Payroll taxes	6,817	3,876	2,674	13,367
Postage and delivery	-	174	-	174
Production costs	191,833	-	-	191,833
Professional fees	8,779	9,636	518	18,933
Rent	-	36,132	-	36,132
	<u>\$ 347,037</u>	<u>\$ 105,047</u>	<u>\$ 40,417</u>	<u>\$ 492,501</u>

The accompanying notes are an integral part of these financial statements.

AZUKA THEATRE COLLECTIVE
STATEMENTS OF CASH FLOWS - MODIFIED CASH BASIS
FOR THE YEARS ENDED JUNE 30, 2024 AND 2023

	<u>2024</u>	<u>2023</u>
Cash flows from operating activities:		
Change in net assets	\$ (22,434)	\$ (19,320)
Adjustments to reconcile change in net assets to net cash used by operating activities:		
Depreciation expense	480	800
Increase (decrease) in:		
Credit card payable	<u>7,475</u>	<u>(144)</u>
Net cash flows used by operating activities	<u>(14,479)</u>	<u>(18,664)</u>
Cash flows from investing activities:		
Purchase of property and equipment	<u>-</u>	<u>-</u>
Net cash flows used by investing activities	<u>-</u>	<u>-</u>
Net decrease in cash	(14,479)	(18,664)
Cash, beginning of year	<u>31,107</u>	<u>49,771</u>
Cash, end of year	<u>\$ 16,628</u>	<u>\$ 31,107</u>

The accompanying notes are an integral part of these financial statements.

AZUKA THEATRE COLLECTIVE
NOTES TO FINANCIAL STATEMENTS
JUNE 30, 2024 AND 2023

Note 1 Summary of Significant Accounting Principles

Organizational Purpose

The Azuka Theatre Collective (“the Organization”) is a Pennsylvania nonprofit corporation chartered in 1999. Its purpose is to promote the arts in the Philadelphia area by producing theatrical works.

Basis of Accounting

The Organization’s policy is to prepare its financial statements on the modified cash basis of accounting; consequently, certain support, revenue and the related assets are recognized when received rather than when earned and certain expenses are recognized when paid rather than when the obligation is incurred.

Net Assets

Net assets are classified based on the existence or absence of donor-imposed restrictions. Net assets are classified as without donor restrictions or with donor restrictions. Support that is restricted by the donor will be included in net assets without donor restrictions if the restriction expires in the reporting period in which the support is recognized.

Property and Equipment

Property and equipment are recorded at cost. The cost of additions and improvements are capitalized; while maintenance and repairs are charged to expense when paid. Upon retirement or other disposition of property and equipment, the cost and related depreciation is removed from the accounts and the resulting gain or loss is included in earnings.

Depreciation

Depreciation is computed using the straight-line method based upon the following useful lives:

Office furniture and equipment	5 years
Furniture and equipment	5 years

Advertising Costs

The Organization’s policy is to expense advertising costs as the costs are incurred. Advertising costs amounted to \$14,735 and \$47,901 for the years ended June 30, 2024 and 2023 respectively.

Donated Services

The value of contributed services has been recognized in these financial statements. Donated services that create or enhance non-financial assets or require specialized skills and would typically need to be purchased if not provided by donation are recognized at their fair value. Donated services that do not meet the above criteria are not recognized in these financial statements.

Cash and Cash Equivalents

For the purpose of the statement of cash flows, the Organization considers all highly liquid investments available for current use with an initial maturity of three months or less to be cash equivalents.

AZUKA THEATRE COLLECTIVE
NOTES TO FINANCIAL STATEMENTS
JUNE 30, 2024 AND 2023

Note 1 Summary of Significant Accounting Principles (Continued)

Restricted Cash

The Organization maintains restricted cash for program costs. Restricted cash for program costs at June 30, 2024 and 2023 was \$16,374 and \$26,900, respectively.

Functional Expenses

The Organization allocates its expenses on a functional basis. Expenses that can be identified with program are recorded directly according to their natural expense classification. Other expenses that are common to several functions are allocated by various methods.

Note 2 Property and Equipment

Property and equipment used in computing depreciation is summarized as follows:

	<u>2024</u>	<u>2023</u>
Office equipment	\$ 2,500	\$ 2,500
Production equipment	20,799	20,799
	<u>\$ 23,299</u>	<u>\$ 23,299</u>

Depreciation expense amounted to \$480 and \$800 for the years ended June 30, 2024 and 2023 respectively.

Note 3 Net Assets With Restrictions

Net assets with restrictions consisted of the following

	<u>2024</u>	<u>2023</u>
Education	<u>\$ 16,374</u>	<u>\$ 26,900</u>

Net assets with restrictions are net assets subject to donor-imposed restrictions that can be met either by actions of the Organization or the passage of time. When donor restrictions expire, that is, when a stipulated time restriction ends or purpose restriction is accomplished, net assets with restrictions are reclassified to net assets without restrictions and reported in the statements of activities as net assets released from restrictions

Note 4 Concentrations of Revenue and Support

For the twelve months ended June 30, 2024, the Organization received \$275,384 in support which is 83% of total support and revenues. Of the total support recorded, \$78,000 was from one donor which represents 28% of total support.

AZUKA THEATRE COLLECTIVE
NOTES TO FINANCIAL STATEMENTS
JUNE 30, 2024 AND 2023

Note 4 Concentrations of Revenue and Support (Continued)

For the twelve months ended June 30, 2023, the Organization received \$424,421 in support which is 90% of total support and revenues. Of the total support recorded, \$251,500 was from three donors which represents 59% of total support.

Note 5 Concentration of Credit Risk

The Organization maintains cash balances in one financial institution, which are insured by the Federal Deposit Insurance Corporation up to \$250,000. At times the Company may exceed these limits. The Company's uninsured cash balances at June 30, 2024 and 2023 was \$ -0-.

Note 6 Income Taxes

The Organization qualifies as a tax-exempt organization under Section 501(c)(3) of the Internal Revenue Code and, accordingly, is not subject to federal income tax.

Income unrelated to the Organization's exempt purpose is subject to Federal income taxes. The receipt of income from advertising sales is subject to taxation as unrelated business income. For the years ended June 30, 2024 and 2023 the Organization paid \$ -0- in income taxes.

The Organization's form 990, Return of Organization Exempt from Income Tax, is subject to examination by the Internal Revenue Service, generally, for three years after they are filed.

Note 7 Leases

The Organization leases office space under an operating lease. Future minimum lease payments under leases that have remaining lease terms in excess of one year at June 30, 2024 are as follows:

2025	<u>\$ 16,919</u>
------	------------------

Rental expense for the years ended June 30, 2024 and 2023 was \$30,114 and \$36,132 respectively.

Rental expense for the years ended June 30, 2024 and 2023 for performance space was \$20,580 and \$29,000 respectively.

In January of 2017 the Organization started leasing office space to an unrelated party. Current rent is \$1,213 per month. The lease is on a month to month basis.

AZUKA THEATRE COLLECTIVE
NOTES TO FINANCIAL STATEMENTS
JUNE 30, 2024 AND 2023

Note 8 In-Kind Contributions

The Organization recorded as revenue and expense \$1,200 and \$2,895 for professional services contributed for the years ended June 30, 2024 and 2023 respectively.

Note 9 Subsequent Events

Management has evaluated events and transactions through January 22, 2025 which is the date the financial statements were available to be issued. Based upon this evaluation, the Organization has determined that there are no subsequent events that have occurred which require adjustment to or disclosure in the financial statements.

Note 10 Liquidity and Reserves

The Organization monitors its liquidity so that it is able to meet its operating needs and other contractual commitments while maximizing the investment of its excess operating cash. The Organization has the following financial assets that could readily be made available within one year of the statement of assets, liabilities and net assets- modified cash basis to fund expenses without limitations:

	<u>2024</u>	<u>2023</u>
Cash	\$ 16,628	\$ 31,107
Less those available for purpose restrictions	<u>-</u>	<u>-</u>
Financial assets available to meet cash needs for general expenditures within one year	<u>\$ 16,628</u>	<u>\$ 31,107</u>