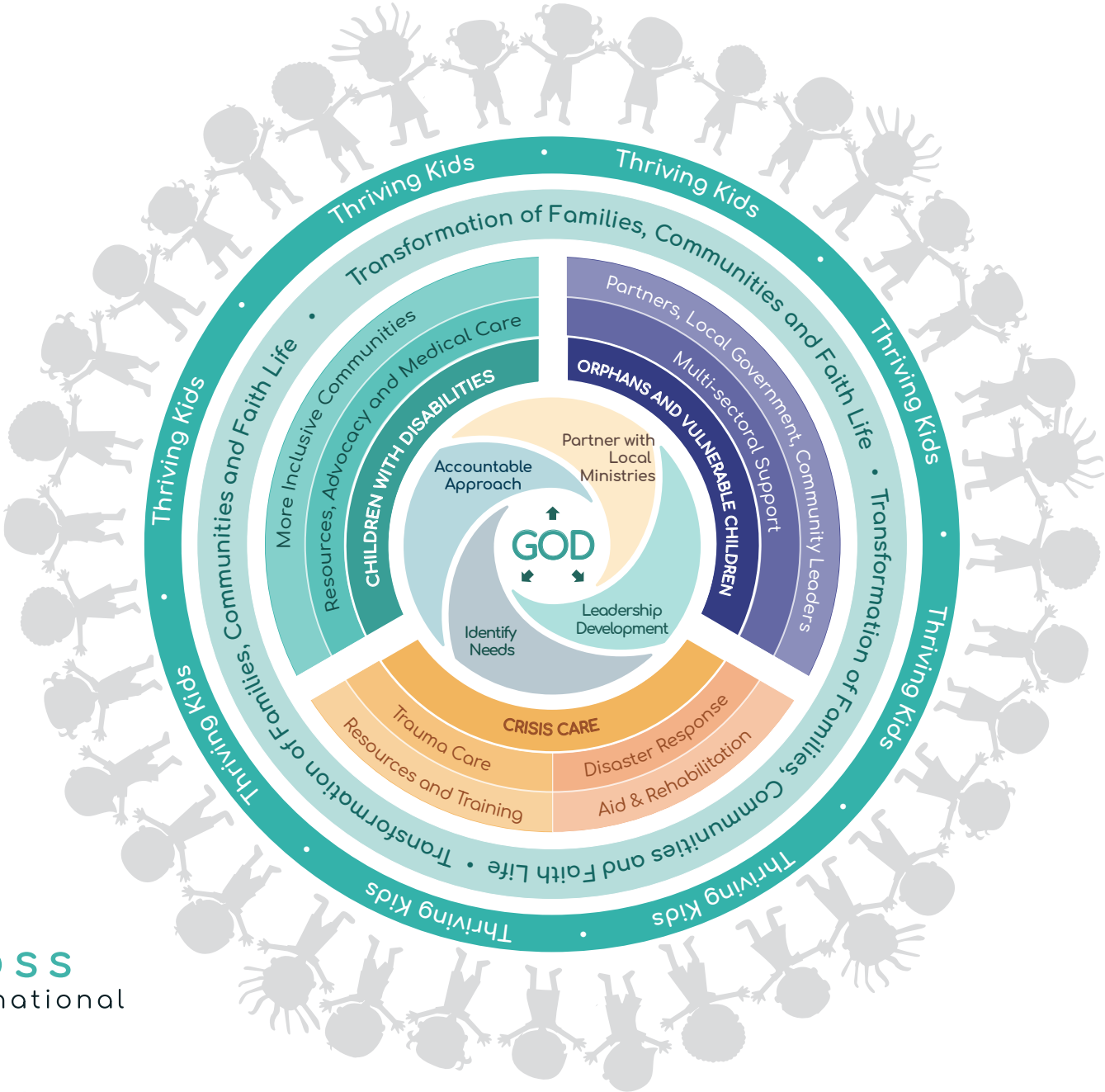


# Cross International Theory of Change



## CROSS INTERNATIONAL'S THEORY OF CHANGE NARRATIVE

All that Cross International (CI) is and does is based on seeking God's will and guidance as an organization. We are called to set our strategic focus in the geographical areas of the Caribbean, Latin America and Africa. This is based on current global needs for relief and development. We then concomitantly foster relationships with our generous believers. It is through CI's relationship with our generous believers that we can serve as a bridge between the church in the US and the church abroad.

CI works in three phases. First, we determine development needs in our strategic geographical area with tools such as the Human Development Index (HDI) and Sustainable Development Goals (SDGs), and assessment of gospel outreach. Second, CI discerns how to best provide support to our partner ministries. CI's support can take the form of technical assistance in strategic planning, financial support and providing in-kind contributions. Additionally, all CI ministry partners receive regular prayer support. Third, through CI's accountable approach, all ministry partners are engaged throughout the project lifecycle. Project plans must be appropriate and feasible. Continuous monitoring occurs through relational conversation, site visits, and weekly mission reports.

Program and financial progress and final reporting ensures transparency and accountability. It also provides opportunity for program adjustments so that donor contributed CI resources provided to partners are maximized as best possible.

**Core Pillars of CI Programs:** To transform vulnerable children into thriving kids, CI invests in three core programmatic pillars: Orphans and Vulnerable Children (OVC), Children with Disabilities (CWD) and Crisis Care and Response (CCR).

1. **OVC:** CI's investment occurs through two primary tracks: OVC Care and Community Transformation Initiatives.
  - a. **OVC Care:** CI and partner programs provide education, nourishing food, shelter and faith formation to beneficiaries. *SO THAT* OVC's pass their school exams, move on to the next grade in their school; are well nourished and receive appropriate healthcare, shelter and the love of Christ. *SO THAT* OVC's complete schooling, are healthy and have dreams and real opportunities for their future. *SO THAT* vulnerable children become thriving kids.
  - b. **Community Transformation Initiatives (CTI's):** CTI's support the creation of the necessary environments in which OVCs can truly thrive. This begins with community needs assessments and baseline surveys to determine the needs of potential CTI communities.



*SO THAT* our ministry partners can appropriately provide multi-sectoral support to integrally improve the lives and livelihoods of families and communities. *SO THAT* families will be better able to provide for the basic needs of their children in nutrition, education, health, housing, access to clean water, and the love of Jesus *SO THAT* vulnerable children become thriving kids.

2. **Children with Disabilities:** Helping Children with Disabilities thrive means providing necessary medical care of the individual child while sensitizing families and communities about children living with disabilities. *SO THAT* families and communities increase their knowledge about children living with disabilities that leads to a decrease in social stigma. *SO THAT* families and communities are more inclusive of the needs of Children with Disabilities. *SO THAT* vulnerable children become thriving kids.
3. **Crisis Care & Response:** Crisis care can be provided in emergency situations or for those who have been victimized and abused. CI understands that crisis care and response almost always begins with emergency support that often takes various forms of aid. However, this aid is always provided with an eye to transition to development initiatives whenever possible. *SO THAT* Cross International and our ministry partners engage in crisis care and response have and implement strategic plans that foster the dignity and empowerment of beneficiaries. *SO THAT* rapid emergency responses can be provided in crisis situations and can transition appropriately from emergency relief to development. *SO THAT* vulnerable children can become thriving kids.

**Necessary Assumptions:** For CI's theory of change to effectively work, four assumptions must always be true.

- a. Cross International works alongside local Christian ministries and are not the direct implementing organization.
- b. Beneficiaries understand the local Christian ministry partner's program and how it fits into their lives. In the case of children beneficiaries, ministries will have this relationship and communication with the guardians of the children.
- c. In order for children to thrive, local Christian ministry partners must operate in locations safe from socio-political disruptions, such as civil unrest, natural disasters, etc. While CI supports local Christian ministries in places that can experience socio-political disruptions, these external challenges can inhibit vulnerable children from thriving.
- d. Ministry partners, Cross International and our generous believers are actively and continuously seeking God's discernment in our lives and our work with the global poor.