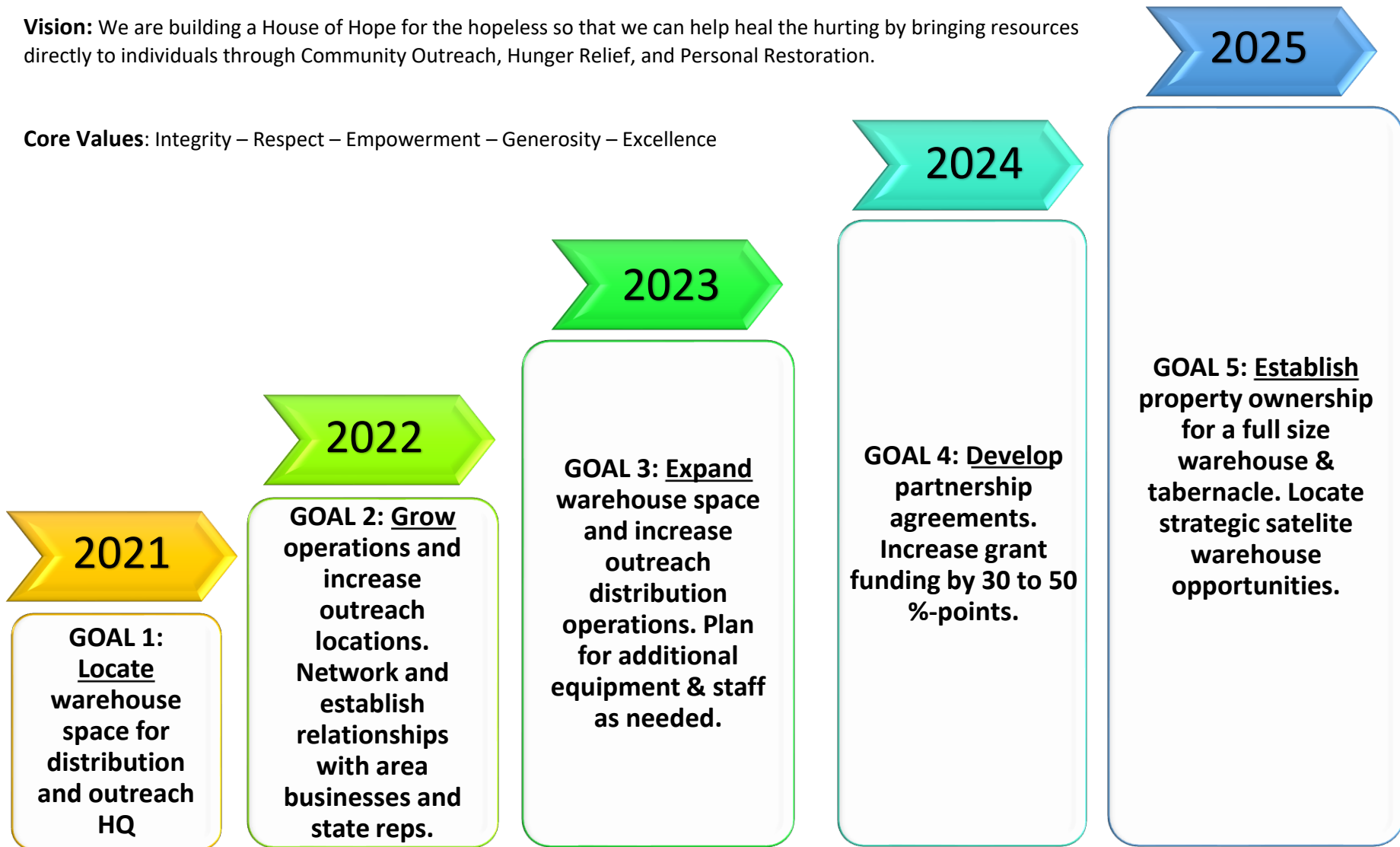


## 5-YEAR STRATEGIC PLAN (2021 – 2025)

**Mission:** The Delaware Regional Dream Center collaborates with state and local nonprofits to provide community outreach to individuals by delivering resources and coordinating services and/or referrals that fulfill life's necessities. We purposefully motivate those individuals to achieve a more fulfilled standard of living as we create, develop, and implement sustainable programs to address our community's needs.

**Vision:** We are building a House of Hope for the hopeless so that we can help heal the hurting by bringing resources directly to individuals through Community Outreach, Hunger Relief, and Personal Restoration.

**Core Values:** Integrity – Respect – Empowerment – Generosity – Excellence



## 5-YEAR STRATEGIC PLAN (2021 – 2025)

### STRATEGIES

2021

1. Warehouse space should be within 3-5 miles of the church.
2. Space should be adequate for a team of 15 people to safely operate.
3. Community outreach events need to be coordinated with appropriate inventory.
4. Promote community involvement on social media and area news outlets.
5. Develop teams of volunteers for packing, distribution, deliveries and outreaches.

2022

1. Meet with school superintendent(s), principal(s), area apartment complex managers to establish outreach opportunities.
2. Become involved in after-school programs/sports to intentionally engage the community.
3. Invite area business leaders & govt. officials to warehouse/outreach activities to gain support.
4. Increase social media and email newsletters to community members.
5. Hire Exec. Director to focus efforts on community outreach growth and program improvements.
6. Perform SWOT analysis.

2023

1. Firm up strategic partnership agreements that will expand our operations into a district distribution hub.
2. Build revenue streams that will provide reoccurring donors with larger one-time gifts.
3. Experiment with Super-Saturday sales and small thrift store type events to help generate additional revenue.
4. Begin reviewing land options for purchase towards a total Dream Center/Parkview campus (10 -12 acres).

2024

1. Cement our community relationships with area schools and businesses.
2. Develop our "thrift store" opportunities with Amazon and other corporate companies.
3. Develop our volunteers with an intern-dicipleship program(s): warehouse operations, retail, non-profit stewardship.
4. Increase grant writing and awards by 50 %-points (>\$300k - \$1 million) per year.

2025

1. Establish a clear vision of where the strategic operations of the Dream Center and Parkview campus will be located.
2. Establish solid community investment programs that will attract donors and build sustainability.
3. Increase grant awards by 30 to 50 %-points while also increasing donations for a total of \$1.5 - 2.0 million/year.
4. Establish a community Biblical training center that meets the needs of the adults and children in our immediate contact area.