



Center For Women & Enterprise
Your Vision. Our Mission.

Eastern Massachusetts

Central Massachusetts

New Hampshire

Rhode Island

Client Demographics

- 84% Women
- 40% Minority
- 72% Low to Moderate Income
- 36% Unemployed

Impact on Participants

- 50% Start a business
- 86% Increase their understanding of business and entrepreneurship
- 65% Increase the revenue of an existing business
- 53% Improve their financial situation
- 40% Decrease their debt
- 40% Increased their savings
- 29% Improve their credit score

Impact

Since 1995, CWE has:

- Trained over 33,500 women (and men)
- Helped entrepreneurs create and/or nurture over 36,800 jobs
- Helped entrepreneurs generate over \$1 billion in wages



CWEonline.org

24 School St. | 7th Fl. | Boston, MA
617-536-0700

50 Elm St. | 2nd Fl. | Worcester, MA
508-363-2300

132 George M. Cohan Blvd. | 2nd Fl
Providence, RI | 401-277-0800

About Us

Established in 1995, the Center for Women & Enterprise (CWE) is a non-profit organization dedicated to providing opportunities for women entrepreneurs and women in business to increase their professional success, personal growth, and financial independence.

As New England's leading organization for women entrepreneurs, we work hard to ensure that all women, regardless of their economic status, are provided access to our programs and services. CWE offers scholarships to disadvantaged clients while fostering influential relationships for successful business women at the other end of the financial spectrum.

Our Mission

CWE provides opportunities for women entrepreneurs and women in business to increase professional success, personal growth, and financial independence.

Our Vision

Our Vision at CWE is to propel all women to achieve economic power and equity.

What We Do

The Center for Women & Enterprise provides education, training, resources and connections to women (and men) through four locations in Boston, MA; Worcester, MA; Providence, RI; and Nashua, NH (opening in 2015).

In addition, CWE is the New England affiliate for Women's Business Enterprise National Council (WBENC), serving as its certification arm for women-owned businesses. WBENC Certification is nationally recognized in helping established women business owners access new corporate contracts with organizations that are actively seeking supplier diversity.

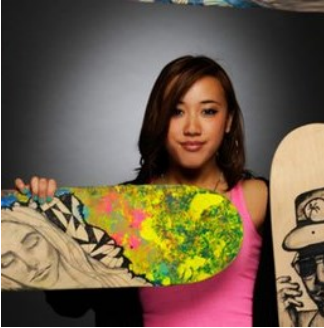
How You Can Help

Donate now. Your tax-deductible donation will help women who cannot afford our programs and services or access the education and tools they need to help themselves become financially self-sufficient.

CWE's 501(c)3 Federal E.I.N is 04-3256236.



Client Spotlight



Dichotomy Skateboards

403 Beacon St, Apt. 4R
Boston, MA

201.675.1829
www.ridedichotomy.com

Mykim Dang

Teenage Ingenuity

In 2004, at only age 17, Mykim Dang formed a business that combined her visual art and skateboarding passions. Now seven years strong, Dichotomy Skateboards produces limited edition skateboards that are both functional items and collectible art pieces.

Stepping Up

Initially, Mykim focused on the creative aspects of her business and left the financials and business planning to a partner. However, one year later her partner left and Mykim was without any business knowledge or experience herself. Refusing to let this setback mean the end of her business, she began researching possible resources and found CWE.

Mykim attended the Exploring Entrepreneurship and How to Obtain Bank Financing classes with her new business partner. "In a mere two hours, we learned the basics of business planning, what it would take to get a loan and the funding we needed to see our dreams through, and how CWE was there to guide us." She also found her fellow attendees especially inspiring. "As we went around the room introducing ourselves and sharing our stories, I couldn't help but feel a rush of electricity run through my body. I knew that I had found a support system."

Giving Back While Making Her Name

Mykim continues to make a name for herself both as an artist and entrepreneur in the male-dominated world of skateboarding. She has been exhibited and published, and she continues to create opportunities for young women in skateboarding. Mykim also gives back to her community through leading skateboarding and art workshops.



greenlion design

PO Box 176
Tiverton, RI

401.864.1650
www.greenlionri.com



Kim Lamothe

Starting a Business without a Business Background

In 2005, Kim Lamothe was in her mid-twenties, overworked, and just getting by on her meager waitressing wages. Interested in a horticultural career and shop of her own, she had no practical experience or knowledge necessary to start a small business – until she walked into the Center for Women & Enterprise (CWE) in Providence.

Registering for Power Up!, the center's thirteen week business planning course, Kim got the help she needed. "The class taught me how to write a business plan, how to develop my elevator pitch, and directed me to a company where I received a \$1,000 loan."

Bringing Gardens and Compost to Suburbia

Coveting your neighbor's garden or compost facilities is not uncommon in suburban areas. Kim Lamothe observed this and saw an opportunity. In 2005 she began Greenlion Designs, a business which offers container plantings, garden design and installation, maintenance, compost set up, and floral arrangements and designs for weddings and special events.

From Green Thumb to Rising Star

Today Kim's business is booming. "The Center for Women & Enterprise changed my life", she says. "Without it I would never have found the confidence to believe in myself, to go from Kim with the green thumb to Greenlion Design." CWE was equally impressed by Kim's success: in 2011 she won the Andrea C. Silbert Rising Star of the Year Award.